



# TASMANIAN GOVERNMENT GAZETTE

PUBLISHED BY  
AUTHORITY  
ISSN 0039-9795

FRIDAY 12 AUGUST 2022

No. 22 225

## Land Use Planning and Approvals

LAND USE PLANNING AND APPROVALS ACT 1993

*Major Projects*

### Major Project Declaration – North East Wind

I, MICHAEL DARREL JOSEPH FERGUSON, Minister for Planning, hereby give notice that I have made a declaration under section 60O of the *Land Use Planning and Approvals Act 1993* to declare the proposed North East Wind project as a Major Project.

The project known as the North East Wind Project, located in north east Tasmania, is intended to generate up to 1260 megawatts of renewable electricity and includes up to 210 wind turbine generators (WTGs), internal roads, marine landing and wharf facility, operation and maintenance facility, meteorological masts, internal transmission lines and battery storage, plus temporary facilities for construction.

The declaration takes effect on the day of this notice.

The declaration can be viewed at [www.planning.tas.gov.au](http://www.planning.tas.gov.au) or at the offices of the Tasmanian Planning Commission at level 3 144 Macquarie Street, Hobart.

Enquiries about the declaration can be directed to the Department of Premier and Cabinet, State Planning Office on 1300 703 977 or email [StatePlanning@dpac.tas.gov.au](mailto:StatePlanning@dpac.tas.gov.au).

Enquiries about the project can be directed to Toby Dove of ACEN Australia by email [info@newind.com](mailto:info@newind.com)

Dated this 12th day of August 2022

MICHAEL DARREL JOSEPH FERGUSON  
Minister for Planning

### DECLARATION OF A MAJOR PROJECT

*LAND USE PLANNING AND APPROVALS ACT 1993*

#### NORTH EAST WIND

I, MICHAEL DARREL JOSEPH FERGUSON, Minister for Planning, pursuant to section 60O(1) of the *Land Use Planning and Approvals Act 1993*, hereby declare the project known as North East Wind and more particularly described in the Schedule to be a Major Project.

The North East Wind project, located in north east Tasmania is intended to generate up to 1260 megawatts of renewable electricity and includes up to 210 wind turbine generators (WTGs), internal roads, marine landing and wharf facility, operation and maintenance facility, meteorological masts, internal transmission lines and battery storage, plus temporary facilities for construction.

Dated this 12th day of August 2022

MICHAEL DARREL JOSEPH FERGUSON  
Minister for Planning

**The Schedule**  
**North East Wind Major Project**

**1.0 Interpretation**

In this Schedule –

*Act* means the *Land use Planning and Approvals Act 1993*

*Project* means the North East Wind Major Project

**2.0 The project location**

For the purposes of section 60Q(1)(a) of the Act, the location of the land on which the project is to be situated is shown on the map below –

**3.0 General project description**

For the purposes of section 60Q(1)(b) and section 60Q(2)(a) of the Act, a general description of the project activities and a general description of the project uses and developments is set out below –

**3.1 The activities that are proposed to be carried out after the construction phase has been completed are:**

- The project will comprise a wind farm of approximately 210 wind turbine generators with an installed capacity of up to 1260 megawatts (MW) of renewable electricity.
- The project will involve the construction, operation and decommissioning of two clusters of wind turbines on the project land.
- At the end of its practical life, the wind farm would be decommissioned in consultation with affected landowners.

**3.2 The uses that are proposed to occur in relation to the project are:**

- The Project is for a 'Utilities' use class, as defined by the State Planning Provisions, including associated infrastructure works. All other activities required for the project are directly associated with and a subservient part to the primary 'Utilities' use class.

**3.3 The developments that are proposed to occur in relation to the project are:****Wind Turbine Generators**

- Approximately 210 wind turbine generators (WTG) with a maximum tip height of 270m
- Hardstand areas at the base of each turbine

**Road and access track network**

- Access and egress points to each cluster from public roads
- Operational access tracks and associated infrastructure on private property

**Other Permanent on-site ancillary infrastructure**

- Permanent site operation and maintenance facility
- Potential marine landing and wharf facility
- Meteorological masts
- Electrical reticulation within each cluster to connect the WTGs to an internal substation
- Battery Energy Storage System (BESS)

**Temporary construction ancillary facilities**

- Construction compounds
- Laydown areas
- Batching plants
- Construction access tracks
- On-site quarrying
- Workers accommodation camp

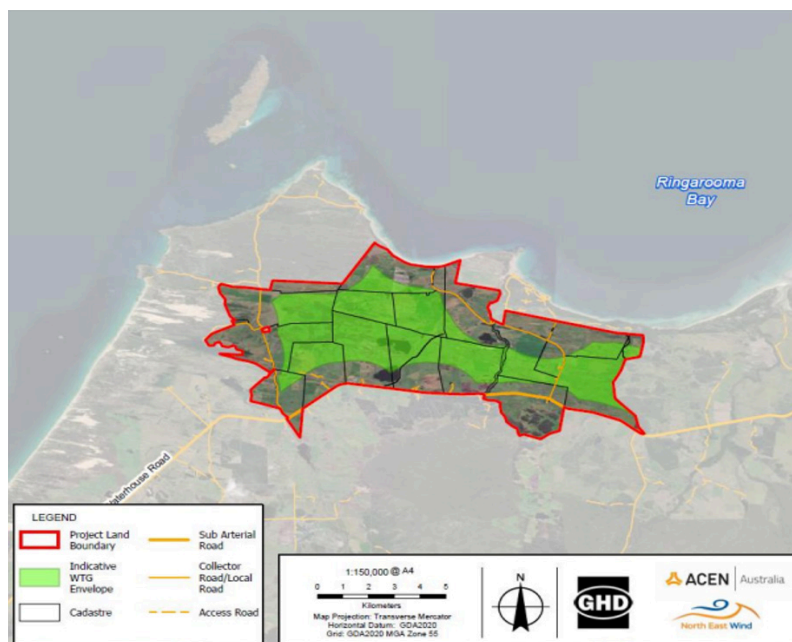
**Staging**

- The project is intended to be constructed over several stages.

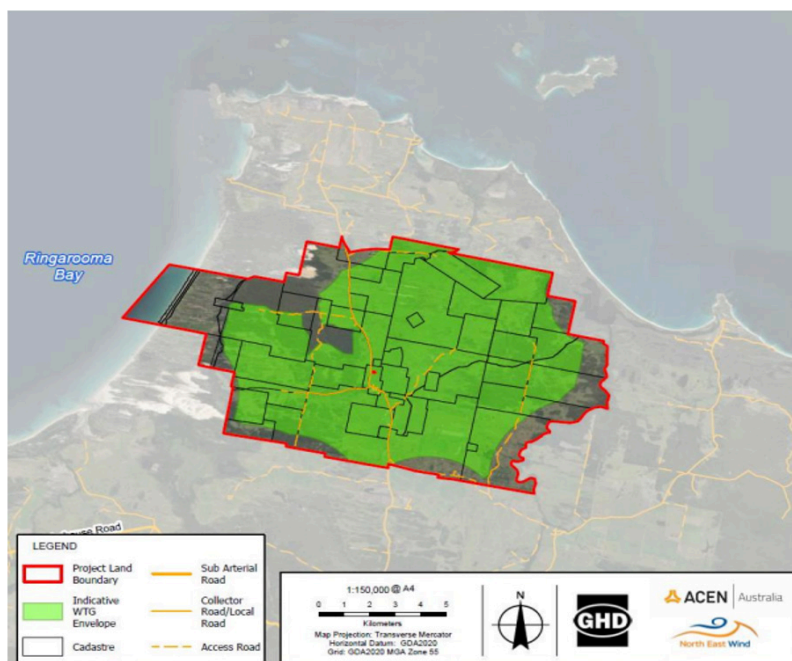
**4.0 General project plan**

For the purposes of section 60Q(1)(c) and section 60Q(2)(b) of the Act, a plan indicating generally on the project land where uses and developments are to occur within the project area is shown below –

Waterhouse Area



## Rushy Lagoon Area



For the purposes of this declaration the co-ordinates for the corners of the declared area over Ringarooma Bay are –

1. Southwest corner: 575,836m E; 5,479,450m N
2. Northwest corner: 577,671m E; 5,481,788m N

Note: the Coordinate system is GDA 2020 MGA Zone 55

### 5.0 The proponent

For the purposes of section 60Q(1)(d) the proponent of the project is ACEN Australia

Acting on behalf of ACEN Australia will be the project development manager –

Toby Dove  
Development Manager  
ACEN Australia  
Suite 2, Level 2,  
15 Castray Esplanade  
BATTERY POINT 7004

Email: [info@newind.com](mailto:info@newind.com)  
Phone: 1800 870 807

### 6.0 Project Eligibility Attributes

For the purposes of section 60Q(1)(e) the attributes of the project specified in section 60M(1) of the Act, which, in my opinion, are such that the project is eligible to be declared a major project are –

(a) the project will have a significant impact on, or make a significant contribution to, the southern region's economy, environment or social fabric in that:

- The Project will make a significant contribution to the Northern Region of Tasmania and the state as a whole.
- The \$2.7 billion Project represents a significantly large investment in a Tasmanian renewable energy project. This level of funding will provide a significant economic benefit, generating employment in project planning, construction, and operation.
- The Project will offer significant opportunities for employment in the Dorset region, generating up to 400 jobs during the peak of construction, and up to 65 ongoing jobs during operation of the Project.
- The activity and employment created by the Project will see increased spending within the region, with local businesses expected to benefit.

(b) the project is of strategic importance to the southern region in that:

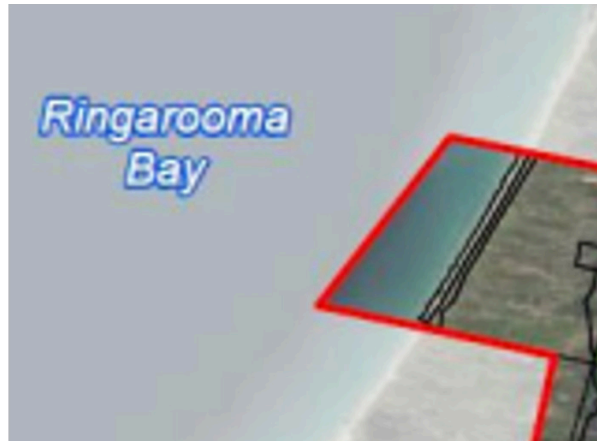
- The Project will significantly increase the generation capacity of renewable electricity for communities and industry in the region and in Tasmania, contributing up to 88% of the new renewable electricity generation required by 2030 to meet the legislated Tasmanian Renewable Energy Target.
- The Project will generate additional renewable electricity supporting major Tasmanian strategic initiatives such as the Tasmanian Renewable Energy Action Plan and the Tasmanian Renewable Hydrogen Action Plan.
- Development of this Project aligns with the regional profile, strategy and policy directions stated in the Northern Tasmanian Regional Land Use Strategy (NTRLUS).

(c) the project is of significant scale and complexity in that:

- The Project will require assessment and permits under one or more of the following Tasmanian acts – *Historic Cultural Heritage Act 1995*, *Threatened Species Protection Act 1995*, *Aboriginal Heritage Act 1975* and *Environmental Management and Pollution Control Act 1994*.
- The Project will require approval under the federal *Environment Protection and Biodiversity Conservation Act 1999*.
- The technical requirements of the Project are broad and detailed, reflecting the scale and complexity of the Project. This includes assessment of geotechnical, cultural, Aboriginal and European cultural heritage, environmental values, engineering, design and planning issues.
- The Project requires complex planning, approvals and construction, spanning two discrete areas of land to occur in multiple stages.
- After construction is complete, the Project will significantly increase the generation capacity of renewable electricity for communities and industry across Tasmania, contributing up to 88% of the new renewable electricity generation required by 2030 to meet the legislated Tasmanian Renewable Energy Target.

#### 7.0 Planning Authority

For the purposes of section 60Q(5), (6) and (7) the Dorset Council is to be the planning authority for the portion of the project land that sits outside of the municipality, which is west of the High Water Mark on Boobyalla Beach and within the area declared for the major project (red line), as shown as on the map below –







***Disclaimer.***

Products and services advertised in this publication are not endorsed by the State of Tasmania and the State does not accept any responsibility for the content or quality of reproduction. The Contractor reserves the right to reject any advertising material it considers unsuitable for government publication.

***Copyright.***

The Tasmanian Government Gazette and Tasmanian State Services are subject to the Copyright Act. No part of any material published in the Tasmanian Government Gazette or the Tasmanian State Services Notices may be reproduced except in accordance with the Copyright Act.

**Printed by Acrodata Tasmania Pty Ltd under authority of the Government of the State of Tasmania.**