



TASMANIAN GOVERNMENT GAZETTE

PUBLISHED BY
AUTHORITY
ISSN 0039-9795

WEDNESDAY 10 MARCH 2021

No. 22 066

CONTENTS

<i>Notice</i>	<i>Page</i>
Administration and Probate	202
Emergency Management	203
Heavy Vehicle National Law	202
Land Acquisition	220
Macquarie Point Development Corporation.....	219
Mental Health	217
Notices to Creditors	201
Public Health	210
Rules Publication	212
Staff Movements.....	222
Unclaimed Monies.....	217
Valuation of Land	213

Notices to Creditors

YVONNE FAY SANDERSON late of 13/6 Lady Clark Avenue, Claremont in Tasmania, Home Duties, Widowed, Deceased.

Creditors, next of kin and others having claims in respect of the property or estate of the deceased, YVONNE FAY SANDERSON who died on 1st day of December 2020, are required by the Executor, TPT WEALTH LTD of Level 2 137 Harrington Street, Hobart in Tasmania, to send particulars to the said Company by the 10th day of April 2021, after which date the Executor may distribute the assets, having regard only to the claims of which it then has notice.

Dated this tenth day of March 2021.

JOANNE HOUGH, Trust Administrator

GLADYS JOY EVANS late of 9 Skeggs Place, Bridgewater in Tasmania, Retired, Widowed, Deceased.

Creditors, next of kin and others having claims in respect of the property or estate of the deceased, GLADYS JOY EVANS who died on 25th day of August 2020, are required by the Executor, TPT WEALTH LTD of Level 2 137 Harrington Street, Hobart in Tasmania, to send particulars to the said Company by the 10th day of April 2021, after which date the Executor may distribute the assets, having regard only to the claims of which it then has notice.

Dated this tenth day of March 2021.

SANDRA KIRK, Trust Administrator

TERENCE JOHN EDWARDS late of 31 Woodward Avenue, Hillcrest in Tasmania, Retired Diesel Technician/Fitter, Divorced, Deceased.

Creditors, next of kin and others having claims in respect of the property or estate of the deceased, TERENCE JOHN EDWARDS who died on 6th day of December 2020, are required by the Executor, TPT WEALTH LTD of Level 2 137 Harrington Street, Hobart in Tasmania, to send particulars to the said Company by the 10th day of April 2021, after which date the Executor may distribute the assets, having regard only to the claims of which it then has notice.

Dated this tenth day of March 2021.

JILL DEZOETE, Trust Administrator

Tasmanian Government Gazette

Text copy to be sent to Acrodata Tasmania Pty Ltd.
Email: govt.gazette@acrodata.com.au Fax: (03) 8888 9948
Mail: GPO Box 1487, Hobart Tas. 7001

Order Information

When using this facility please ensure that your order and a copy of the material are faxed to Acrodata Tasmania Pty Ltd on (03) 8888 9948

Deadlines

All copy must be received by last mail Friday or 4pm Friday prior to publication. A proof will be emailed prior to publication. Please supply an email address in order for us to forward a proof. If your advertisement requires alterations, they are to be sent as soon as possible, but before 4pm on the Monday prior to publication. After this deadline Acrodata Tasmania Pty Ltd will not be held responsible for any errors and the advertisement will be printed.

Enquiries

Subscriptions enquiries phone (03) 6210 9634
Account enquiries phone (03) 6210 9666
Gazette Notice enquiries phone (03) 6210 9631

Out of Hours Special Gazette Notifications

Out-of-hours notification for Special Gazette phone (03) 6210 9634 or mobile 0448 046 747

Gazette and State Service Online

The Tasmanian Government Gazette and State Service Notices are now available online at:—www.gazette.tas.gov.au

HELEN HAWLEY TANNER, late of 1/47 Plaister Court, Sandy Bay in Tasmania, Public Servant / Never Married, died on 26 December 2020.

Creditors, next of kin and others having claims in respect of the property of the abovenamed deceased, are required by the Executor, BRIDGET FIONA EMILY RHEINBERGER, C/- Tremayne Fay Rheinberger Lawyers, 119 Macquarie Street, Hobart in Tasmania to send particulars of their claim in writing to the Registrar of the Supreme Court of Tasmania by 12 April 2021 after which date the Executor may distribute the assets, having regard only to the claims of which she then has notice.

Dated this tenth day of March 2021.

TREMAYNE FAY RHEINBERGER LAWYERS
Solicitors for the Estate

WILFRED JOHN HAYWOOD late of Eliza Purton Nursing Home, 26-28 Lakin Street, West Ulverstone in Tasmania, who died on 16/11/2020.

Creditors, next of kin and others having claims in respect of the property of the abovenamed deceased are required by the Executors, LLOYD WILFRED HAYWOOD and CHRISTINE VENA BISHOP, C/- Friend & Edwards Lawyers, 28a King Edward Street, Ulverstone in Tasmania, to send particulars of their claim in writing to the Registrar of the Supreme Court of Tasmania, Salamanca Place, Hobart in Tasmania on or before 16/04/2021 after which date the Executors may distribute the assets having regard only to the claims of which the Executors then have notice.

Dated this tenth day of March 2021.

FRIEND & EDWARDS Lawyers
Solicitors for the Estate

Administration and Probate

Administration and Probate Act 1935

Notice for Claims

In the Estate of PAUL GEE late of Barossa Park Lodge, 17a Clydesdale Avenue, Glenorchy in Tasmania who died on 29 October 2020 at Barossa Park Lodge, 17a Clydesdale Avenue, Glenorchy in Tasmania.

NOTICE is hereby given that all creditors, next of kin and other persons having claims in respect of the property or the Estate of the abovenamed deceased, are required by the Executors ROBYN JEAN PLOUGHMAN and MICHAEL DOUGLAS JOHNS, C/- Archer Bushby Lawyers, 63 Charles Street, Launceston in Tasmania to send particulars in writing to The Registrar, Probate Registry, Supreme Court of Tasmania, Salamanca Place, Hobart in Tasmania on or before 12 April 2021, after which date the Executors may distribute the assets having regard only to the claims of which they then have notice.

Dated this tenth day of March 2021.

ARCHER BUSHBY
Solicitors for the Estate

Administration and Probate Act 1935

Notice of Application to Reseal Probate

Notice is hereby given that, after the expiration of 14 days from the publication hereof, PAMELA MARGARET SIKORA of 112 Mount Chalmers Road, Cawarral Queensland, the executor of the Will of the estate of RYSZARD BRUNO SIKORA, late of 112 Mount Chalmers Road, Cawarral Queensland, deceased, to whom probate of the said will was granted by the Court of Queensland on the 14/01/2021, will apply to the Supreme Court of Tasmania in its Ecclesiastical Jurisdiction that the seal of the Said Supreme Court of Tasmania may be affixed to the said probate pursuant to Part VI of the *Administration and Probate Act 1935*.

Dated this tenth day of March 2021.

PAUL JOSEPH MCGRATH, McGRATH & CO LAWYERS
Australian legal practitioner acting on their behalf signature

Administration and Probate Act 1935

Notice of Application to Reseal Probate

Notice is hereby given that, after the expiration of 14 days from the publication hereof, ANDREW CHARLES GFRERER of Unit 1, 8 Duke Street, Ashburton in Victoria, the executor of the will of the estate of LIYAN GFRERER, late of Unit 1, 8 Duke Street, Ashburton in Victoria, deceased, to whom probate of the said will was granted by the Supreme Court of Victoria on 12 February 2021, will apply to the Supreme Court of Tasmania in its Ecclesiastical Jurisdiction that the seal of the Said Supreme Court of Tasmania may be affixed to the said probate pursuant to Part VI of the *Administration and Probate Act 1935*.

Dated this tenth day of March 2021.

BUTLER MCINTYRE & BUTLER, LAWYERS
Acting on behalf of the Applicants

Heavy Vehicle National Law

HEAVY VEHICLE NATIONAL LAW (TASMANIA)
ACT 2013

NOTICE OF PUBLICATION OF REGULATION

Notice is given under s8(1) of the *Heavy Vehicle National Law (Tasmania) Act 2013* that the *Heavy Vehicle National Legislation Amendment Regulation 2021* made under the *Heavy Vehicle National Law Act 2012* (Qld) on 11 February 2021, with a commencement date of 22 February 2021 (other than Division 3 of Part 3, which commences on the commencement of section 15 of the *Road Vehicle Standards Act 2018* of the Commonwealth), was published on the New South Wales legislation website on 12 February 2021. A copy of the regulation is obtainable by visiting https://gazette.legislation.nsw.gov.au/so/download.w3p?id=Regulation_2021_2021-42.pdf

Regulation:
Heavy Vehicle National Legislation Amendment Regulation 2021

Authorising Law:
Heavy Vehicle National Law Act 2012 (Qld)

MICHAEL FERGUSON
Minister for Infrastructure and Transport

Emergency Management

EMERGENCY MANAGEMENT ACT 2006 DIRECTIONS IN RELATION TO PERSONS ARRIVING IN TASMANIA

A significant threat of an emergency is occurring in Tasmania due to the coronavirus disease COVID-19 ('the Disease'). To protect persons from distress, injury or death, I make the following directions in the exercise of emergency powers authorised under Section 40 of the *Emergency Management Act 2006* and pursuant to clauses 1(1)(b), 1(1)(q) and 1(1)(t) of Schedule 1 to that Act:

DIRECTION TO PROVIDE INFORMATION

1. Every person who arrives in Tasmania from a departure point outside of Tasmania is required, on arrival and subsequent to their arrival, to answer any question asked by an authorised officer within the meaning of the *Emergency Management Act* ('authorised officer') or to provide any document or other information required by an authorised officer.

DIRECTIONS IN RELATION TO ISOLATION IN AN ACCOMMODATION FACILITY

2. If, pursuant to these Directions, a person is required to isolate in an accommodation facility, they are also required to:
 - i. comply with any lawful directions given to them by an authorised officer during the period they are required to remain in isolation at an accommodation facility, and
 - ii. remain in the room provided to them at the accommodation facility specified to them for the period they are required to remain in isolation unless permitted to leave their room by an authorised officer, in which case they must wear a **facemask** at all times when absent from their room unless for a **permitted reason**.

PROHIBITION ON ARRIVING IN TASMANIA AT KING ISLAND, FLINDERS ISLAND OR ANY ISLAND IN THE FURNEAUX GROUP OF ISLANDS

3. If, pursuant to these Directions, a person is required to isolate in an accommodation facility upon their arrival in Tasmania, they are prohibited from arriving in Tasmania at King Island, Flinders Island or any island in the Furneaux group of islands ('the Islands') except with the prior approval of the Deputy State Controller.
4. Unless they elect to immediately leave Tasmania, a person who arrives in Tasmania at one of the Islands in contravention of the prohibition in Direction 3, may be required by an authorised officer to isolate at an accommodation facility on mainland Tasmania. A person who is subject to such a requirement must comply with any directions of an authorised officer concerning:
 - i. their departure from the Island, and
 - ii. transit to the accommodation facility on mainland Tasmania.
5. A person who arrives in Tasmania at one of the Islands in contravention of the prohibition in Direction 3 who elects to immediately leave Tasmania, may be required to isolate at an accommodation facility on the Island or on mainland Tasmania as specified to them by an authorised officer, until they are able to leave Tasmania. A person who is subject to such a requirement must comply with any directions of an authorised officer concerning:
 - a. transit to the accommodation facility, and
 - b. their departure from the Island.

DIRECTIONS IN RELATION TO THE MOVEMENT OF VESSELS & PLACES OF ARRIVAL

6. The master of a **vessel** whose course commences outside **Coastal Waters** is prohibited from docking, berthing or anchoring that **vessel** at any place within **Coastal Waters** which is not an **approved maritime entry point**.
7. The prohibition in Direction 6 does not apply:
 - a. if the master of the **vessel** has the prior approval of the Deputy State Controller to dock, berth or anchor the **vessel** at a place other than an **approved maritime entry point**. Persons given such an approval are required to comply with any conditions that are imposed by the Deputy State Controller; or
 - b. in an emergency or if it is essential to refuel, in which case the master of the **vessel** is required to immediately report the **vessel particulars** to Biosecurity Tasmania.
8. The master of a **vessel** whose course commences outside **Coastal Waters** is prohibited from docking, berthing or anchoring that **vessel** at any place within **Coastal Waters** unless:
 - a. **vessel particulars** have been reported to Biosecurity Tasmania at least 24 hours before the **vessel** is scheduled to dock, berth or anchor; and
 - b. the master of the **vessel** has a receipt from Biosecurity Tasmania for the **vessel particulars** that have been reported in accordance with paragraph (a); and
 - c. the master of the **vessel** has notified Biosecurity Tasmania of any changes to the **vessel particulars** that have been reported in accordance with paragraph (a).
9. A person who arrives in Tasmania by **vessel** from a departure point outside of **Coastal Waters**, is prohibited from disembarking that **vessel** at a place which is not an **approved maritime entry point**.
10. The prohibition in Direction 9 does not apply:
 - a. to a person who has been granted prior approval by the Deputy State Controller to arrive in Tasmania at a place other than an **approved maritime entry point**. Persons given such an approval are required to comply with any conditions that are imposed by the Deputy State Controller; or
 - b. in an emergency, in which case the person arriving is required to immediately report the **vessel particulars** to Biosecurity Tasmania.
11. Unless they elect to immediately leave Tasmania, a person who arrives in Tasmania by **vessel** from a departure point outside of **Coastal Waters** and disembarks that **vessel** at a place which is not an **approved maritime entry point** in contravention of the prohibition in Direction 9, may be required by an authorised officer to isolate for 14 days at an accommodation facility specified to them by an authorised officer or at **suitable premises**.
12. A person who elects to leave Tasmania after disembarking a **vessel** at a place which was not an **approved maritime entry point**, may be required to isolate at an accommodation facility specified to them by an authorised officer or at **suitable premises** until they are able to leave Tasmania. A person who is subject to such a requirement must comply with any directions of an authorised officer concerning:
 - a. Transit to the accommodation facility, and
 - b. Their departure from Tasmania.

DIRECTIONS UNDER THE *PUBLIC HEALTH ACT 1997*

13. Every person who arrives in Tasmania from a departure point outside of Tasmania is required to comply with any directions of the **Director** issued under the *Public Health Act 1997* applicable to persons arriving in Tasmania.
14. A person who falls within paragraphs (a) or (b) of the definition of **Affected Person** who is not in isolation by virtue of Direction 22 or 29, is required to isolate themselves for 14 days at an accommodation facility specified to them by an authorised officer or at **suitable premises** approved by the Deputy State Controller if they fail to comply with any direction of the **Director** which requires them to undergo a test for the Disease.
15. If a person referred to in Direction 14 subsequently undergoes a test for the Disease and it returns a negative result, they may leave isolation if approved by the Deputy State Controller.
16. A person who falls within paragraphs (a), (b), (c) or (d) of the definition of **Affected Person** who is in isolation pursuant to Direction 14, 19 or 21, is required to isolate in the accommodation facility or at the **suitable premises** for an additional 10 days to the period of isolation required by virtue of Direction 14, 19 or 21 if they fail to comply with any directions of the **Director** which requires them to undergo a test for the Disease.
17. If a person referred to in Direction 16 has completed the period of isolation required by virtue of Direction 14, 19 or 21 and subsequently undergoes a test for the Disease and it returns a negative result, they may leave isolation if approved by the Deputy State Controller.

DIRECTIONS IN RELATION TO HIGH RISK ARRIVALS

18. An **Affected Person** must not enter Tasmania unless they are an **Authorised Person**.
19. An **Authorised Person** who is permitted to enter Tasmania is required to isolate for 14 days at an accommodation facility specified to them by an authorised officer.
20. Direction 19 does not apply to an **Affected Person** who is under the age of 18 years who arrives in Tasmania unaccompanied by an adult.
 - a. If such a person has spent any time in a **high risk area** within 14 days prior to their arrival in Tasmania, or attended **high risk premises** within 14 days prior to their arrival in Tasmania, they are required to isolate at **suitable premises** and comply with the requirements specified in Schedule 2 for 14 days from their arrival.
 - b. If such a person has arrived in Australia from overseas within 14 days prior to their arrival in Tasmania, they are required to isolate at premises approved by the Deputy State Controller and comply with the requirements specified in Schedule 2 for 14 days from their arrival and any additional requirements imposed by the Deputy State Controller and notified to them in writing.
21. The Deputy State Controller may authorise a person subject to Direction 19 to isolate at **suitable premises**. Persons given such an authorisation are required to comply with the requirements specified in Schedule 2 for 14 days from their arrival and any additional requirements imposed by the Deputy State Controller and notified to them in writing.
22. Direction 19 does not apply to an **Authorised Person** specified in Schedule 1 other than a person specified in Items 2 or 8 of that Schedule, unless that person:
 - a. arrived in Australia from overseas within 14 days prior to their arrival in Tasmania; or
 - b. disembarked from a cruise ship within 14 days prior to their arrival in Tasmania; or
 - c. on arrival in Tasmania is displaying any **clinical symptoms of COVID-19** or has displayed any such symptoms within 72 hours prior to their arrival.

Such persons are subject to Direction 19 unless excluded from the operation of that Direction by operation of Direction 20.
23. An **Authorised Person** who is not subject to Direction 19 by virtue of Direction 22, is required to comply with the requirements specified in Schedule 4 for 14 days from their arrival and any additional requirements imposed by the Deputy State Controller and notified to them in writing.
24. If an **Affected Person** who is not an **Authorised Person** arrives in Tasmania they must leave as soon as possible if required to do so by an authorised officer and comply with any direction of an authorised officer concerning their departure from Tasmania.
25. Direction 25 does not apply to a person who is subject to Direction 20.
26. An authorised officer may require an **Affected Person** required to leave Tasmania pursuant to a requirement under Direction 24 to isolate at an accommodation facility specified to them by the authorised officer until they are able to leave Tasmania.
27. If an **Affected Person** who is not an **Authorised Person** arrives in Tasmania in contravention of Direction 18 and is not subject to a requirement to leave Tasmania pursuant to Direction 24, they are required to isolate for 14 days at an accommodation facility specified to them by an authorised officer.
28. If, on their arrival in Tasmania, it is not possible to verify/determine whether a person is an **Authorised Person** then Direction 19 applies to that person until their status can be verified/determined.
29. Direction 19 does not apply to a member of a maritime crew granted an approval under Item 8 of Schedule 1 unless that person:
 - a. arrived in Australia from overseas within 14 days prior to their arrival in Tasmania; or
 - b. disembarked from a cruise ship within 14 days prior to their arrival in Tasmania; or
 - c. on arrival in Tasmania is displaying any **clinical symptoms of COVID-19** or has displayed any such symptoms within 72 hours prior to their arrival.
30. A member of a maritime crew who is not subject to Direction 19 by virtue of Direction 29 is required, for 14 days from their arrival, to comply with Schedule 4 and any additional requirements imposed by the Deputy State Controller and notified to them in writing.
31. If, on their arrival in Tasmania, it is not possible to verify/determine whether a person satisfies the requirements of Direction 29, then they are required to isolate in **suitable premises** approved by the Deputy State Controller until that information can be verified/determined.

DIRECTIONS IN RELATION TO PERSONS ARRIVING FROM MEDIUM RISK AREAS

32. If a person who arrives in Tasmania has:

- a. spent any time in a **medium risk area** within 14 days prior to their arrival in Tasmania other than during **authorised transit**, or
- b. attended **medium risk premises** on a date or within the period identified by the **Director**, if such attendance is within 14 days prior to their arrival in Tasmania, they must isolate for 14 days at **suitable premises**. A person who is subject to this direction is also required to comply with the requirements specified in Schedule 2 for 14 days from their arrival in Tasmania.

33. Direction 32 does not apply to a person who is specified in Schedule 1 unless that person is displaying any **clinical symptoms of COVID-19** on arrival in Tasmania or has displayed any such symptoms within 72 hours prior to their arrival. Such persons are subject to Direction 32.

34. If a person specified in Schedule 1 is subject to Direction 32 by virtue of Direction 33 and they subsequently undergo a test for the Disease which returns a negative result, they are not required to isolate for the balance of the 14 days.

35. A person specified in Schedule 1 who is not subject to Direction 32 by virtue of Direction 33, or is no longer subject to Direction 32 by virtue of Direction 34, is required to comply with the requirements specified in Schedule 4 for a period of 14 days from their arrival in Tasmania and any additional requirements imposed by the Deputy State Controller and notified to them in writing.

36. If, on arrival in Tasmania it is not possible to verify/determine whether a person falls within Schedule 1, then Direction 32 applies to that person until that information can be verified/determined.

37. If a person to whom Direction 32 applies fails or is unable to nominate **suitable premises** on their arrival to Tasmania, then they must isolate at an accommodation facility specified to them by an authorised officer for 14 days, or until **suitable premises** are identified and approved by the Deputy State Controller.

RELEASE FROM ISOLATION

38. The Deputy State Controller may authorise the release of a person from isolation prior to the expiration of 14 days, subject to any requirement that is imposed by the Deputy State Controller and notified to them in writing.

39. A person who is in isolation at an accommodation facility pursuant to Direction 19 of these directions who does not fall within paragraph (c), (d) or (e) of the definition of **Affected Person**, may transit directly from that accommodation facility to **suitable premises** and remain in, or at, those premises until the expiration of the 14 day period of isolation if:

- a. the **high risk area** they have spent time in within 14 days of their arrival in Tasmania ceases to be on the list referred to in the definition of **high risk area** and the area has been placed on the list referred to in the definition of **medium risk area**; or
- b. the **high risk premises** they have attended within 14 days of their arrival in Tasmania ceases to be on the list referred to in the definition of **high risk premises** and the premises have been placed on the list referred to in the definition of **medium risk premises**.

40. A person who is in isolation at an accommodation facility pursuant to Direction 19 of these directions or in isolation at **suitable premises** pursuant to Direction 21 of these directions, who does not fall within paragraph (c), (d) or (e) of the definition of **Affected Person**, is no longer subject to the requirement to isolate or to comply with the requirements specified in Schedule 2 if:

- a. the **high risk area** they have spent time in within 14 days of their arrival in Tasmania ceases to be on the list referred to in the definition of **high risk area** and has not been placed on the list referred to in the definition of **medium risk area**; or
- b. **high risk premises** they have attended within 14 days of their arrival in Tasmania ceases to be on the list referred to in the definition of **high risk premises** and has not been placed on the list referred to in the definition of **medium risk premises**.

41. Directions 39 and 40 do not apply to a person who has, within 14 days of their arrival in Tasmania:

- a. spent time in a geographical area or location, or on a transport route that remains on the list referred to in the definition of **high risk area**; or
- b. attended **high risk premises** that remain on the list referred to in the definition of **high risk premises** on a date or within the period identified by the **Director**.

42. A person who, by virtue of Direction 39, is permitted to leave an accommodation facility, is required to comply with:

- a. any directions given to them by an authorised officer in relation to their transit to suitable premises; and
- b. the requirements specified in paragraphs b, c, d, e, f, g, h, i and j of Schedule 2 until the expiration of the 14 day period of isolation.

43. A person who is in isolation pursuant to Direction 32 of these directions is no longer subject to the requirement to isolate or to comply with the requirements specified in Schedule 2 if:

- a. the **medium risk area** they have spent time in within 14 days of their arrival in Tasmania ceases to be on the list referred to in the definition of **medium risk area**; or
- b. the **medium risk premises** they have attended within 14 days of their arrival in Tasmania ceases to be on the list referred to in the definition of **medium risk premises**.

44. Direction 43 does not apply to a person who has, within 14 days of their arrival in Tasmania:

- a. spent time in a geographical area or location, or on a transport route that remains on the list referred to in the definition of **medium risk area**; or
- b. spent time in a geographical area or location, or on a transport route that appears on the list referred to in the definition of **high risk area**; or
- c. attended **high risk premises** that remain on the list referred to in the definition of **high risk premises** on a date or within the period identified by the **Director**; or
- d. attended **medium risk premises** that remain on the list referred to in the definition of **medium risk premises** on a date or within the period identified by the **Director**.

DEFINITIONS

Affected Person means:

- a. A person who has spent any time in a **high risk area** within 14 days prior to their arrival in Tasmania, other than during **authorised transit**.
- b. A person who has attended **high risk premises** on a date or within the period identified by the **Director**, if such attendance is within 14 days prior to their arrival in Tasmania; or
- c. A person who has arrived in Australia from overseas within 14 days prior to their arrival in Tasmania, other than:
 - i. a person who arrives in Australia from New Zealand who has not, within 14 days prior to their arrival:
 - (A) spent time in any other country; or
 - (B) spent time in a **high risk area** or **medium risk area**; or
 - (C) attended **high risk premises** or **medium risk premises**.
 - ii. a person who arrives in Tasmania from Antarctica and is a participant in an Australian Antarctic Division (AAD) Antarctic program as either an expeditioner or associated crew member (which includes flight crews), provided that:
 - (A) within 14 days of arriving in Tasmania from Antarctica the person did not spend any time in a **medium risk area** or **high risk area**; and
 - (B) within 14 days of arriving in Tasmania, and while in Antarctica, the person did not come into contact with a person who was not also engaged in an AAD Antarctic program as an expeditioner or associated crew member; or
- d. A person who has disembarked from a cruise ship within 14 days prior to their arrival in Tasmania; or
- e. A person who, at the time of their arrival in Tasmania, is subject to a requirement to isolate under a law of another State or Territory.

approved hotel is a hotel, motel or place of accommodation that is contained within a list approved by the **Director** and published on the website coronavirus.tas.gov.au for the purpose of the definition of **authorised transit**.

Approved maritime entry point means:

Bell Bay	Naracoopa
Bridport	Port Huon
Burnie	Port Latta
Currie	Risdon
Devonport	Smithton
Grassy	Spring Bay
Hobart	St Helens
Inspection Head	Stanley
Lady Barron	Strahan
Launceston	Whitemark
Longreach	Wynyard

Authorised Person means:

- a. In the case of an Affected Person who has spent any time in a **high risk area** within 14 days prior to their arrival in Tasmania:
 - i. a person specified in Items 1, 2, 3, 5, 6, 7 or 8 of Schedule 1; or
 - ii. a person specified in Item 4 of Schedule 1 who has been granted prior approval by the Deputy State Controller to enter Tasmania.
- b. In the case of an Affected Person who attended **high risk premises** on a date or within the period identified by the **Director**, if such attendance is within 14 days prior to their arrival in Tasmania:
 - i. a person specified in Items 1, 2, 3, 5, 6, 7 or 8 of Schedule 1; or
 - ii. a person specified in Item 4 of Schedule 1 who has been granted prior approval by the Deputy State Controller to enter Tasmania.
- c. In the case of an **Affected Person** who has arrived in Australia from overseas within 14 days prior to their arrival in Tasmania, a person who has been granted prior approval by the Deputy State Controller to enter Tasmania.
- d. In the case of an **Affected Person** who has disembarked from a cruise ship within 14 days prior to their arrival in Tasmania, a person who has been granted prior approval by the Deputy State Controller to enter Tasmania.
- e. In the case of a person who, at the time of their arrival in Tasmania, is subject to a requirement to isolate under a law of another State or Territory, a person who has been granted prior approval by the Deputy State Controller to enter Tasmania.

authorised transit is:

- a. Transit directly through an airport in a **medium risk area** or **high risk area** where the person does not leave the confines of the airport except to board a flight or to stay at an **approved hotel** overnight; or
- b. Transit from a place of isolation at an accommodation facility which is within a **high risk area**, where the person travels directly (otherwise than on a transport route which was, at the time of transiting, on the list referred to in the definition of **high risk area** or the list referred to in the definition of **medium risk area**) to an airport or seaport of departure without breaking their journey except to obtain fuel; or
- c. Transit through a **high risk area** by vehicle (otherwise than on a transport route which was, at the time of transit, on the list referred to in the definition of **high risk area** or the list referred to in the definition of **medium risk area**) to an airport or seaport without breaking their journey except to obtain fuel; or
- d. Transit through a **medium risk area** by vehicle (otherwise than on a transport route which was, at the time of transit, on the list referred to in the definition of **high risk area** or the list referred to in the definition of **medium risk area**) to an airport or seaport without breaking their journey except to:
 1. obtain fuel; or
 2. enable a passenger to embark or disembark the vehicle provided that the vehicle did not stop in a **high risk area**; or
 3. disembark for the purpose of transit to another vehicle in order to travel directly to the airport or seaport of departure, provided

the person does not disembark in a **high risk area**; or

- e. Transit from a place of isolation at an accommodation facility which is within a **medium risk area** where the person travels (otherwise than on a transport route which was, at the time of transiting, on the list referred to in the definition of **high risk area** or the list referred to in the definition of **medium risk area**) to an airport or seaport of departure without breaking their journey except to:
 1. obtain fuel, or
 2. enable a passenger to embark or disembark the vehicle provided that the vehicle did not stop in a **high risk area**, or
 3. disembark for the purpose of transit to another vehicle in order to travel directly to the airport or seaport of departure, provided the person does not disembark in a **high risk area**; or
- f. Transit through a **medium risk area** or **high risk area** by a person specified in Item 5 of Schedule 1 in the course of their duties, who wears appropriate personal protective equipment at all times; or
- g. Transit which has the prior approval of the Deputy State Controller.

clinical symptoms of COVID-19 are:

- i. Temperature of $\geq 37.5^{\circ}$;
- ii. Chills and/or night sweats;
- iii. Cough, shortness of breath, sore throat;
- iv. Loss of taste or smell.

Coastal Waters means -

- (a) The part or parts of the territorial sea of Australia that is or are within the adjacent area in respect of Tasmania other than any part referred to in section 4(2) of the *Coastal Waters (State Powers) Act 1980* of the Commonwealth; and
- (b) Any sea that is on the landward side of any part of the territorial sea and is within the adjacent area in respect of Tasmania but is not within the limits of Tasmania.

Director means the Director of Public Health appointed under the *Public Health Act 1997*.

facemask means a fitted face covering, other than a shield, that fits securely around the face and is designed, or made, to be worn over the nose and mouth to provide protection against infection.

high risk area means a geographical area, location or transport route that is contained within a list approved by the **Director** and published on the website coronavirus.tas.gov.au as being an area, location or transport route with an elevated risk of transmission of the Disease.

high risk premises means premises that:

- i. have been identified by the **Director** as being premises which have an elevated risk of transmission of the Disease as at a specified date or within a specified period; and
- ii. are contained within a list approved by the **Director** and published on the website coronavirus.tas.gov.au.

medium risk area means a geographical area, location or transport route that is contained within a list approved by the **Director** and published on the website coronavirus.tas.gov.au as being an area, location or transport route with a moderate risk of transmission of the Disease.

medium risk premises means premises that:

- i. have been identified by the **Director** as being premises which have a moderate risk of transmission of the Disease as at a specified date or within a specified period; and
- ii. are contained within a list approved by the **Director** and published on the website coronavirus.tas.gov.au.

permitted reason for the purposes of Direction 2(ii), Schedule 2 - paragraph (j), and Schedule 4 - paragraph (a), is:

- i. the person is undergoing medical care or treatment that is unable to be provided while the person wears a facemask;
- ii. the person has left their isolation location due to an emergency and it is not practicable in the circumstances for the person to obtain or wear the facemask;
- iii. wearing the facemask would create a risk to the health or safety of the person;
- iv. the person may lawfully remove, or is lawfully required to remove the facemask;
- v. the person holds a medical certificate, or other documentation from a 'medical practitioner' as defined in the *Acts Interpretation Act 1931*, that certifies that the person has a physical or mental health illness, condition or disability that makes the wearing of a facemask unsuitable;
- vi. the person is in a vehicle:
 - a. alone, or
 - b. only with a person or person with whom they ordinarily reside;
- vii. the person has the written approval of the Deputy State Controller to not wear a facemask.

suitable premises means:

- i. a private residence;
- ii. an airbnb or other short term rental accommodation where the person or family isolating is/are the only occupant(s);
- iii. other premises approved by the Deputy State Controller.

vessel includes:

- (a) A ship, boat, hovercraft, ferry, raft and other water craft; and
- (b) A vehicle that is capable of use in or on water, whether or not self propelled.

vessel particulars are:

- (i) Name and contact details for the shipping company, shipping line or cruise ship company (if applicable);
- (ii) Name and contact details for the master of the vessel;
- (iii) Description of the vessel;
- (iv) Intended time, date and location of arrival in Tasmania;
- (v) Full names and contact details for all passengers and crew; and
- (vi) Identities of any person who intends to disembark the vessel on arrival to Tasmania.

These directions take effect from 11:59pm on 1 March 2021 and will continue in force until further notice. The directions in relation to persons arriving in Tasmania made by me on 4 February 2020 are revoked with effect from 11:59pm on 1 March 2021.

Dated this 26th day of February 2021 at 10:00am.

S A TILYARD
Deputy State Controller
Delegate of the State Controller

SCHEDULE 1**SCHEDULE OF SPECIFIED PERSONS****1. National and State Security and Governance**

- a. Any person who, in the carriage of their duties, is responsible for the safety of the Nation or Tasmania against threats such as terrorism, war, or espionage or acts of foreign interference and is required to be present in Tasmania for such purposes, and any persons assisting such persons; and
- b. Active Military personnel (other than those who fall within Item 7 of this Schedule) who are required to perform time-critical duties in Tasmania which require the person to be physically present in Tasmania; and
- c. A member of the Commonwealth Parliament who is ordinarily resident in Tasmania.

2. Health Services

- a. A clinician in relation to health who is ordinarily resident in Tasmania and who is requested by the Secretary of the Department of Health, or their delegate, to return to Tasmania to present for duty in Tasmania; and
- b. A clinician in relation to health who is requested by the Secretary of the Department of Health, or their delegate, to present for duty in Tasmania to perform, during the period in which the person will be present in Tasmania, duties unable to be appropriately performed by a person ordinarily resident in Tasmania.

3. Transport, freight and logistics

- a. Any person who, in the carriage of their duties, is responsible for the provision of transport or freight and logistics into, within, and out of Tasmania; and
- b. Flight crew and ship crew - for the purpose of delivery of persons, freight or logistics into, within and out of Tasmania.

4. Specialist skills critical to maintaining key industries or businesses

- a. Any specialists required for industry or business continuity and maintenance of competitive operations where the appropriate skills are not available in Tasmania, where the service is time-critical and where the provision of the service requires that the person be physically present in Tasmania; and
- b. Any person who, in the carriage of their duties, is responsible, while in Tasmania, for critical maintenance or repair of infrastructure critical to Tasmania.

5. Persons transporting patients, organs and tissues

- a. A person who, in the course of their duties, participates in the aeromedical delivery, transport or retrieval of patients, organs or tissues into, or out of, Tasmania.

6. Police officers

- a. A member of the Tasmania Police Service returning to Tasmania from travel in the course of their duties; and
- b. Members of the Australia Federal Police or a police force or police service of another State or a Territory of the Commonwealth (other than those who fall within Item 7) travelling to Tasmania in the course of their duties

7. Emergency Management Response

- a. A person who, in the course of their duties (whether paid or voluntary), participates in time critical emergency management activities at the request of the State Controller (or their delegate), as a member of a team or unit, and within the scope of National arrangements for the provision of interstate resources during an emergency.

8. Other persons, or classes of persons, approved by the Deputy State Controller**SCHEDULE 2****REQUIREMENTS FOR ISOLATING IN PRIVATE RESIDENCES**

Reference: Directions 23, 32, 42

A person to whom Schedule 2 applies is required to:

- a. Transit directly between their point of arrival in Tasmania and their place of residence and comply with any directions given to them by an authorised officer in relation to their transit; and
- b. Remain in, or at, that residence for a period of 14 days unless:
 - i. For the purpose of attending premises to obtain medical care and the person -
 - (A) travels directly to those premises, and
 - (B) returns directly to their residence after obtaining that care; or
 - ii. In an emergency situation that requires the person to leave their residence to protect their personal safety, or the safety of another, and the person -
 - (A) immediately returns to their residence once the emergency situation has passed, or
 - (B) once the emergency situation has passed, travels directly to other premises that are suitable for the person to reside in until the expiration of the 14 days; or
 - iii. For the purpose of leaving Tasmania, in which case the person is required to travel directly from their place of residence to the point of departure and observe the hygiene practices described at paragraphs (f), (g) and (h) of this Schedule during transit; or
 - iv. Permitted to leave by an authorised officer and the person complies with any lawful directions given to them by an authorised officer; and
- c. Isolate themselves from physical contact with all persons other than persons with whom they ordinarily reside for the period of 14 days; and
- d. Monitor themselves for:
 - i. any **clinical symptoms of COVID-19**, and
 - ii. sudden and unexplained:
 - (A) fatigue,
 - (B) runny nose,
 - (C) muscle pain,
 - (D) joint pain,
 - (E) diarrhea,
 - (F) nausea/vomiting, or
 - (G) loss of appetite; and
- e. If they believe that they are displaying a symptom referred to in paragraph (d) - contact the Public Health Hotline, or a medical practitioner, to determine whether to be tested or assessed for infection by the Disease;
- f. Cover their mouth when coughing or sneezing; and
- g. Use disposable tissues and dispose of such tissues, after use, in a waste receptacle that other people will not touch except if protected from contact with the receptacle or its contents; and
- h. Wash their hands frequently and thoroughly with soap, or an alcohol-based sanitizing chemical, especially after using a toilet, before and after eating and before and after returning from outdoors;
- i. Maintain, where practicable, physical distancing of at least

- 1.5 metres from other person; and
- j. Wear a facemask at all times when absent from their residence for any of the reasons specified in Paragraph (b) of this Schedule unless for a **permitted reason**.

SCHEDULE 3 REQUIREMENTS

SCHEDULE 4 REQUIREMENTS FOR SPECIFIED PERSONS

Reference: Directions 23, 30 and 35

A person to whom Schedule 4 applies is required to:

- a. Wear a **facemask** at all times when:
 - i. in public; or
 - ii. undertaking their work or official duties- unless for a **permitted reason**; and
 - b. Remain in, or at, the premises that are their place of residence within Tasmania unless:
 - i. For the purpose of attending work or undertaking official duties;
 - ii. Shopping for food, beverages, fuel, medicine and urgent household supplies;
 - iii. For the purpose of attending premises to obtain medical care and the person-
 - (A) travels directly to those premises, and
 - (B) returns directly to their residence after obtaining that care;
 - iv. In an emergency situation that requires the person to leave their residence to protect their personal safety, or the safety of another, and the person -
 - (A) immediately returns to their place of residence once the emergency situation has passed; or
 - (B) once the emergency situation has passed, travels directly to other premises that are suitable for the person to reside in until the expiration of the 14 days;
 - v. For the purpose of leaving Tasmania, in which case the person is required to travel directly from their residence to the point of departure and observe the hygiene practices described at paragraphs a(i), (e), (f) and (g) of this Schedule; or
 - vi. Permitted to leave by an authorised officer and the person complies with any lawful directions given to them by an authorised officer; and
 - c. Monitor themselves for:
 - i. any **clinical symptoms of COVID-19**, and
 - ii. sudden and unexplained:
 - (A) fatigue,
 - (B) runny nose,
 - (C) muscle pain,
 - (D) joint pain,
 - (E) diarrhea,
 - (F) nausea/vomiting, or
 - (G) loss of appetite; and
 - d. If they believe that they are displaying a symptom referred to in paragraph (c)(i) or (c)(ii) -
 - i. cease to attend a place, other than a place referred to in subparagraph (ii), for the purposes of work; and
 - ii. as far as is reasonably practicable without putting their survival at risk, remain in, or return and remain in -
 - (A) the premises that are their place of residence within Tasmania; or
 - (B) other premises within Tasmania that are suitable for the person to reside- except as necessary to attend at premises, nominated by their medical practitioner or the advisor on the Public Health Hotline, for the purposes of being tested for the presence of the Disease; and
 - iii. contact the Public Health Hotline, or a medical practitioner, to determine whether to be tested or assessed for infection by the Disease; and
 - e. Cover their mouth when coughing or sneezing; and
 - f. Use disposable tissues and dispose of such tissues, after use, in a waste receptacle that other people will not touch except if protected from contact with the receptacle or its contents; and
 - g. Wash their hands frequently and thoroughly with soap, or an alcohol-based sanitizing chemical, especially after using a toilet, before and after eating and before and after returning from outdoors; and
 - h. Maintain, where practicable, physical distancing of at least 1.5 metres from other persons; and
 - i. If the person -
 - (A) is within a category referred to in Item 2 or 5 of Schedule 1 to this direction; or
 - (B) is otherwise in close contact with a person who, by virtue of the characteristics of the person, ought reasonably be regarded as especially vulnerable to infection or serious illness due to the Disease (a "vulnerable person") -
- ensure that they, at all times when engaged in the provision of health services or health care to persons, or in close proximity to a vulnerable person, wear a **facemask** or wears other personal protective equipment that is normally worn during such contact by persons engaged in the provision of those health services or that health care.

Public Health

PUBLIC HEALTH ACT 1997

DIRECTION UNDER SECTION 16

(Arrival requirements for certain travellers into Tasmania – No. 6)

I, SCOTT McKEOWN, the Deputy Director of Public Health, in pursuance of section 16 of the *Public Health Act 1997* ("the Act"), in order to manage the threat to public health posed by the notifiable disease known as COVID-19 ("the disease"), direct that, commencing on 2 March 2021 –

- (a) a relevant traveller who arrives in Tasmania is required to undergo the following clinical assessments on the arrival of the relevant traveller in Tasmania:
 - (i) questions as to the health of the traveller, in respect of the clinical symptoms of the disease, on his or her arrival;
 - (ii) a check of the temperature of the traveller; and
- (b) a clinical assessment referred to in paragraph (a) is to be conducted by an authorised officer, a registered nurse or an enrolled nurse; and
- (c) a relevant traveller is taken to have complied with paragraph (a) in respect of a clinical assessment if –
 - (i) a person required to conduct the clinical assessment is not present at the location where the relevant traveller arrives in Tasmania at the time the relevant traveller arrives; and
 - (ii) the clinical assessment is conducted in accordance with this direction as soon as practicable, and no later than 24 hours, after the relevant traveller arrives in Tasmania; and
- (d) a relevant traveller who arrives in Tasmania as an unaccompanied minor is taken to have complied with paragraph (a) in respect of a clinical assessment if the clinical assessment is conducted, in accordance with this direction, no later than 24 hours after the relevant traveller arrives in Tasmania; and
- (e) paragraph (a) does not apply to a person who is not required to isolate or quarantine on his or her arrival in Tasmania, if –
 - (i) the person is arriving in Tasmania for the purposes of transport, freight or logistics; and
 - (ii) the person –
 - (A) does not leave the seaport or airport, where the person arrived in Tasmania, while the person remains in Tasmania; or
 - (B) remains in Tasmania for a period of less than 24 hours and, while the person remains in Tasmania, complies with the requirements of any directions under the *Public Health Act 1997* or the *Emergency Management Act 2006*; or
 - (C) provides evidence of a negative test for the disease that has been performed on the person in the 7-day period before he or she arrived and the person has not had a positive test for the disease within that 7-day period; and
- (f) as a result of a clinical assessment of a relevant traveller under paragraph (a), the Director of Public Health, or his or her delegate, may require the relevant traveller to take the action that the Director of Public Health or his or her delegate considers appropriate in the circumstances and specifies in the requirement; and

- (g) in addition to the requirements of paragraph (a) –
 - (i) a relevant traveller, other than a relevant traveller to whom paragraph (e)(ii)(C) applies, is required to undergo a test for the disease within 24 hours after he or she arrives in Tasmania and on, or as soon as practicable after, the 12th day after he or she arrives in Tasmania, if the relevant traveller –
 - (A) within the 14-day period before arriving in Tasmania, has spent time in a high risk area or premises, as determined by the Director of Public Health or his or her delegate, other than time spent transiting directly through the area; and
 - (B) is not required to isolate or quarantine on his or her arrival in Tasmania; and
 - (C) has not left Tasmania since he or she so arrived in Tasmania; and
 - (ii) if a relevant traveller to whom paragraph (e)(ii)(C) applies has spent time in a high risk area or premises, as determined by the Director of Public Health or his or her delegate, within the 14-day period before arriving in Tasmania, the relevant traveller is required, while he or she remains in Tasmania, to –
 - (A) undergo a test for the disease within each 7-day period after his or her last preceding test for the disease until –
 - (I) at least 14 days have passed since he or she so arrived in Tasmania; and
 - (II) he or she has undergone at least 2 tests for the disease since he or she last spent time in the high risk area or premises; and
 - (B) carry evidence of the date of his or her last test for the disease; and
 - (iii) a relevant traveller is required to undergo a test for the disease before the 3rd day after he or she arrives in Tasmania and on, or as soon as practicable after, the 12th day after he or she arrives in Tasmania, if the relevant traveller –
 - (A) within the 14-day period before arriving in Tasmania, has spent time in a high risk area or premises, as determined by the Director of Public Health or his or her delegate, other than time spent transiting directly through the area; and
 - (B) is required to isolate or quarantine on his or her arrival in Tasmania; and
 - (iv) if a relevant traveller is required to isolate or quarantine on his or her arrival in Tasmania, other than a relevant traveller to whom sub-paragraph (v) applies, the relevant traveller is required to undergo a test for the disease before the 3rd day after he or she arrives in Tasmania and on, or as soon as practicable after, the 12th day after he or she arrives in Tasmania, if –
 - (A) where the relevant traveller arrives in Tasmania due to his or her employment or engagement as a crewmember of a vessel, the

- relevant traveller has spent time in a country other than Australia or New Zealand, or spent time in an at-risk area of New Zealand, within the 28-day period before arriving in Tasmania; and
- (B) for any other relevant traveller, the relevant traveller has spent time in a country other than Australia or New Zealand, or spent time in an at-risk area of New Zealand, within the 14-day period before arriving in Tasmania; and
- (C) the relevant traveller has not completed isolation, or quarantine, requirements imposed by the Commonwealth, or a State or Territory of Australia, since his or her return to Australia from the other country; and
- (v) if a relevant traveller -
- (A) arrives in Tasmania from a country other than Australia or New Zealand, or from an at-risk area of New Zealand, due to his or her employment or engagement as a crewmember of an aircraft; and
- (B) is required to isolate or quarantine on his or her arrival in Tasmania -
- the relevant traveller is required to undergo a test for the disease -
- (C) as soon as is practicable, and no later than 24 hours, after his or her arrival in Tasmania unless he or she has had a test for the disease, performed in Australia within the 7-day period immediately before his or her arrival in Tasmania, that was negative for the disease; and
- (D) within each 7-day period after his or her last preceding test for the disease, performed in Australia, until -
- (I) at least 14 days have passed since he or she so arrived in Tasmania; and
- (II) he or she has undergone at least 2 tests for the disease since he or she last arrived in Tasmania; and
- (h) paragraph (g)(iii), (iv) and (v) does not apply to a relevant traveller if the relevant traveller is required to isolate in respect of the disease under another direction under section 16 or 42 of the Act; and
- (i) if a relevant traveller is required to isolate or quarantine on arriving in Tasmania, the relevant traveller must wear a mask from the time of his or her arrival in Tasmania until the relevant traveller arrives at the part, of premises, where he or she intends to isolate or quarantine as so required; and
- (j) the Director of Public Health, or his or her delegate, may exempt a person, or a specified class of persons, from undergoing one or more of the clinical assessments and tests required under this direction, subject to the conditions, if any, that the Director of Public Health or his or her delegate, respectively, consider appropriate in the circumstances; and
- (k) in this direction -
- (i) **arrives in Tasmania**, in relation to a person, means that the person has entered the land within Tasmania; and
- (ii) **at-risk area of New Zealand** means an area, or premises, within New Zealand which the Director of Public Health, or his or her delegate, has determined to be a high risk, or medium risk, to public health in respect of the disease; and
- (iii) **authorised officer** has the same meaning as in the *Emergency Management Act 2006*; and
- (iv) **clinical symptoms of the disease** means the following symptoms:
- (A) a temperature of 37.5°C or more;
- (B) night sweats;
- (C) chills;
- (D) coughing;
- (E) shortness of breath;
- (F) sore throat;
- (G) loss of taste;
- (H) loss of smell; and
- (v) **relevant traveller** means a person arriving in Tasmania who -
- (A) within the 14-day period before arriving in Tasmania, has spent time in a medium risk area or premises, or a high risk area or premises, as determined by the Director of Public Health or his or her delegate, other than time spent transiting directly through the area; or
- (B) within the 14-day period before arriving in Tasmania, has spent time in -
- (I) country other than Australia or New Zealand; or
- (II) an at-risk area of New Zealand; or
- (C) within the 14-day period before arriving in Tasmania, has disembarked from a cruise ship; and
- (vi) **test for the disease** means a nucleic acid detection test, for the genetic material of SARS-CoV-2, conducted by a laboratory with the relevant accreditation, for such a test, by the National Association of Testing Authorities; and
- (vii) **transiting directly**, through an area, means the person transiting through the area only stopped in the area to -
- (A) disembark, at an airport within the area, from a flight that originated outside the area, if the person only leaves that airport on a flight where the destination is outside of the area; or
- (B) refuel the vehicle being used to transit through the area; and
- (l) on 2 March 2021, the direction under section 16 of the Act, entitled *Arrival requirements for certain travellers into Tasmania - No. 5* and given by the Director of Public Health on 12 February 2021, is revoked.

Dated this 2nd day of March 2021.

SCOTT McKEOWN
Deputy Director of Public Health

Rules Publication

RULES PUBLICATION ACT 1953

NOTICE OF THE MAKING OF STATUTORY RULES

In accordance with the provisions of the Rules Publication Act 1953, notice is given of the making of the following statutory rules:-

Title of Act (if any) under which statutory rules made	Number allotted to statutory rules	Title or subject matter of statutory rules
(1) <i>Biosecurity Act 2019</i>	S. R. 2021, No. 15	Proclamation under section 2
(2) <i>Taxi and Hire Vehicle Industries Act 2008</i>	S. R. 2021, No. 16	<i>Taxi Industry Amendment Regulations 2021</i>
(3) <i>Annulled Convictions Act 2003</i>	S. R. 2021, No. 17	<i>Annulled Convictions Order 2021</i>
(4) <i>Neighbourhood Disputes About Plants Act 2017</i>	S. R. 2021, No. 18	<i>Neighbourhood Disputes About Plants Amendment Regulations 2021</i>

GENERAL PURPORT OR EFFECT OF THE ABOVEMENTIONED STATUTORY RULES

(1) Proclamation under section 2 of the *Biosecurity Act 2019*

This proclamation fixes 31 March 2021 as the day on which certain provisions of the *Biosecurity Act 2019* (being the remainder of uncommenced provisions of the Act, excepting sections 75 and 282 and Schedule 3) commence.

(2) *Taxi Industry Amendment Regulations 2021*

These regulations amend the *Taxi Industry Regulations 2018* by correcting a typographical error in the heading to a Schedule.

(3) *Annulled Convictions Order 2021*

This order amends the *Annulled Convictions Act 2003* by specifying members of the State Emergency Service of Tasmania, or an emergency service of another State or Territory, as work for which annulled convictions are required to be disclosed.

(4) *Neighbourhood Disputes About Plants Amendment Regulations 2021*

These regulations amend the *Neighbourhood Disputes About Plants Regulations 2017* by prescribing the fee that is to accompany an application, made under the *Neighbourhood Disputes About Plants Act 2017*, for a completion order.

(Copies of the abovementioned statutory rules may be purchased at The Print Division Tasmania, 46 Brisbane Street, Hobart, Phone: 03 6210 9633, Email: parliament@acrodta.com.au

ROBYN WEBB, Chief Parliamentary Counsel

Valuation of Land

VALUATION OF LAND ACT 2001

ADJUSTMENT FACTORS

I hereby give notice that in accordance with Section 50A of the Valuation of Land Act 2001, I did on 26 February 2021 determine the adjustment factors as set out hereunder that will apply to the valuation districts in the State of Tasmania for the rating year 2021-2022.

LAND VALUE ADJUSTMENT FACTORS

Locality of 'General' includes all localities in the valuation district unless a locality is identified.

BREAK O'DAY						
LOCALITY	CLASS					
	RESIDENTIAL	COMMERCIAL	INDUSTRIAL	PRIMARY PRODUCTION	COMMUNITY SERVICES	OTHER
GENERAL	1.40	1.30	1.30	1.40	1.30	1.30
CORNWALL	1.50	1.30	1.30	1.40	1.30	1.30
FINGAL	1.50	1.30	1.30	1.40	1.30	1.30
ST MARYS	1.50	1.30	1.30	1.40	1.30	1.30

BRIGHTON						
LOCALITY	CLASS					
	RESIDENTIAL	COMMERCIAL	INDUSTRIAL	PRIMARY PRODUCTION	COMMUNITY SERVICES	OTHER
GENERAL	1.20	1.00	1.00	1.00	1.00	1.00
BRIDGEWATER	1.40	1.00	1.00	1.00	1.00	1.00
GAGEBROOK	1.40	1.00	1.00	1.00	1.00	1.00
HERDSMANS COVE	1.40	1.00	1.00	1.00	1.00	1.00

BURNIE						
LOCALITY	CLASS					
	RESIDENTIAL	COMMERCIAL	INDUSTRIAL	PRIMARY PRODUCTION	COMMUNITY SERVICES	OTHER
GENERAL	1.20	1.10	1.10	1.25	1.10	1.10

CENTRAL COAST						
LOCALITY	CLASS					
	RESIDENTIAL	COMMERCIAL	INDUSTRIAL	PRIMARY PRODUCTION	COMMUNITY SERVICES	OTHER
GENERAL	1.25	1.20	1.20	1.25	1.20	1.20

CENTRAL HIGHLANDS						
LOCALITY	CLASS					
	RESIDENTIAL	COMMERCIAL	INDUSTRIAL	PRIMARY PRODUCTION	COMMUNITY SERVICES	OTHER
GENERAL	1.00	1.00	1.00	1.30	1.00	1.00

CIRCULAR HEAD						
LOCALITY	CLASS					
	RESIDENTIAL	COMMERCIAL	INDUSTRIAL	PRIMARY PRODUCTION	COMMUNITY SERVICES	OTHER
GENERAL	1.05	1.05	1.05	1.30	1.05	1.05

CLARENCE						
LOCALITY	CLASS					
	RESIDENTIAL	COMMERCIAL	INDUSTRIAL	PRIMARY PRODUCTION	COMMUNITY SERVICES	OTHER
GENERAL	1.30	1.10	1.10	1.00	1.10	1.10
CLARENDON VALE	1.60	1.10	1.10	1.00	1.10	1.10
OPOSSUM BAY	1.20	1.10	1.10	1.00	1.10	1.10
SOUTH ARM	1.20	1.10	1.10	1.00	1.10	1.10

DERWENT VALLEY						
LOCALITY	CLASS					
	RESIDENTIAL	COMMERCIAL	INDUSTRIAL	PRIMARY PRODUCTION	COMMUNITY SERVICES	OTHER
GENERAL	1.20	1.10	1.10	1.25	1.10	1.10
GRANTON	1.50	1.10	1.10	1.25	1.10	1.10
NEW NORFOLK	1.50	1.10	1.10	1.25	1.10	1.10

DEVONPORT						
LOCALITY	CLASS					
	RESIDENTIAL	COMMERCIAL	INDUSTRIAL	PRIMARY PRODUCTION	COMMUNITY SERVICES	OTHER
GENERAL	1.30	1.30	1.30	1.35	1.30	1.30

DORSET						
LOCALITY	CLASS					
	RESIDENTIAL	COMMERCIAL	INDUSTRIAL	PRIMARY PRODUCTION	COMMUNITY SERVICES	OTHER
GENERAL	1.40	1.30	1.30	1.40	1.30	1.30
BRANXHOLM	2.00	2.00	1.30	1.40	1.30	1.30
DERBY	4.00	4.00	1.30	1.40	1.30	1.30

FLINDERS						
LOCALITY	CLASS					
	RESIDENTIAL	COMMERCIAL	INDUSTRIAL	PRIMARY PRODUCTION	COMMUNITY SERVICES	OTHER
GENERAL	1.20	1.10	1.10	1.40	1.10	1.10
LADY BARRON	1.15	1.10	1.10	1.40	1.10	1.10
PALANA	1.15	1.10	1.10	1.40	1.10	1.10

GEORGE TOWN						
LOCALITY	CLASS					
	RESIDENTIAL	COMMERCIAL	INDUSTRIAL	PRIMARY PRODUCTION	COMMUNITY SERVICES	OTHER
GENERAL	1.40	1.20	1.20	1.40	1.20	1.20
BEECHFORD	1.20	1.20	1.20	1.40	1.20	1.20
BELLINGHAM	1.20	1.20	1.20	1.40	1.20	1.20
HILLWOOD	1.20	1.20	1.20	1.40	1.20	1.20
LOW HEAD	1.20	1.20	1.20	1.40	1.20	1.20

GLAMORGAN-SPRING BAY						
LOCALITY	CLASS					
	RESIDENTIAL	COMMERCIAL	INDUSTRIAL	PRIMARY PRODUCTION	COMMUNITY SERVICES	OTHER
GENERAL	1.25	1.00	1.00	1.25	1.00	1.00
BICHENO	1.40	1.00	1.00	1.25	1.00	1.00
ORFORD	1.50	1.00	1.00	1.25	1.00	1.00
SPRING BEACH	1.50	1.00	1.00	1.25	1.00	1.00
TRIABUNNA	1.40	1.00	1.00	1.25	1.00	1.00

GLENORCHY						
LOCALITY	CLASS					
	RESIDENTIAL	COMMERCIAL	INDUSTRIAL	PRIMARY PRODUCTION	COMMUNITY SERVICES	OTHER
GENERAL	1.50	1.25	1.25	1.25	1.25	1.25
COLLINSVALE	1.20	1.25	1.25	1.25	1.25	1.25

HOBART						
LOCALITY	CLASS					
	RESIDENTIAL	COMMERCIAL	INDUSTRIAL	PRIMARY PRODUCTION	COMMUNITY SERVICES	OTHER
GENERAL	1.50	1.50	1.50	1.50	1.50	1.50

HUON VALLEY						
LOCALITY	CLASS					
	RESIDENTIAL	COMMERCIAL	INDUSTRIAL	PRIMARY PRODUCTION	COMMUNITY SERVICES	OTHER
GENERAL	1.30	1.10	1.10	1.45	1.10	1.10
CYGNET	1.60	1.10	1.10	1.45	1.10	1.10
FRANKLIN	1.60	1.10	1.10	1.45	1.10	1.10
HUONVILLE	1.60	1.10	1.10	1.45	1.10	1.10
RANELAGH	1.60	1.10	1.10	1.45	1.10	1.10

KENTISH						
LOCALITY	CLASS					
	RESIDENTIAL	COMMERCIAL	INDUSTRIAL	PRIMARY PRODUCTION	COMMUNITY SERVICES	OTHER
GENERAL	1.40	1.20	1.20	1.35	1.20	1.20

KING ISLAND						
LOCALITY	CLASS					
	RESIDENTIAL	COMMERCIAL	INDUSTRIAL	PRIMARY PRODUCTION	COMMUNITY SERVICES	OTHER
GENERAL	1.30	1.10	1.10	1.40	1.10	1.10

KINGBOROUGH						
LOCALITY	CLASS					
	RESIDENTIAL	COMMERCIAL	INDUSTRIAL	PRIMARY PRODUCTION	COMMUNITY SERVICES	OTHER
GENERAL	1.50	1.20	1.20	1.45	1.20	1.20
ADVENTURE BAY	1.30	1.20	1.20	1.30	1.20	1.20
ALONNAH	1.20	1.20	1.20	1.30	1.20	1.20
APOLLO BAY	1.20	1.20	1.20	1.30	1.20	1.20
BARNES BAY	1.20	1.20	1.20	1.30	1.20	1.20
DENNES POINT	1.30	1.20	1.20	1.30	1.20	1.20
GREAT BAY	1.20	1.20	1.20	1.30	1.20	1.20
KILLORA	1.20	1.20	1.20	1.30	1.20	1.20
LUNAWANNA	1.30	1.20	1.20	1.30	1.20	1.20
NORTH BRUNY	1.20	1.20	1.20	1.30	1.20	1.20
SIMPSONS BAY	1.20	1.20	1.20	1.30	1.20	1.20
SOUTH BRUNY	1.20	1.20	1.20	1.30	1.20	1.20

LATROBE						
LOCALITY	CLASS					
	RESIDENTIAL	COMMERCIAL	INDUSTRIAL	PRIMARY PRODUCTION	COMMUNITY SERVICES	OTHER
GENERAL	1.35	1.25	1.25	1.35	1.25	1.25
SHEARWATER	1.35	1.25	1.10	1.35	1.25	1.25

LAUNCESTON						
LOCALITY	CLASS					
	RESIDENTIAL	COMMERCIAL	INDUSTRIAL	PRIMARY PRODUCTION	COMMUNITY SERVICES	OTHER
GENERAL	1.35	1.30	1.30	1.25	1.30	1.30

MEANDER VALLEY						
LOCALITY	CLASS					
	RESIDENTIAL	COMMERCIAL	INDUSTRIAL	PRIMARY PRODUCTION	COMMUNITY SERVICES	OTHER
GENERAL	1.35	1.20	1.20	1.30	1.20	1.20
PROSPECT VALE	1.25	1.20	1.20	1.30	1.20	1.20
SUMMERHILL	1.25	1.20	1.20	1.30	1.20	1.20

NORTHERN MIDLANDS						
LOCALITY	CLASS					
	RESIDENTIAL	COMMERCIAL	INDUSTRIAL	PRIMARY PRODUCTION	COMMUNITY SERVICES	OTHER
GENERAL	1.35	1.20	1.20	1.30	1.20	1.20
BREADALBANE	1.45	1.20	1.20	1.30	1.20	1.20
DEVON HILLS	1.45	1.20	1.20	1.30	1.20	1.20
EVANDALE	1.45	1.20	1.20	1.30	1.20	1.20
LONGFORD	1.45	1.20	1.20	1.30	1.20	1.20
PERTH	1.45	1.20	1.20	1.30	1.20	1.20
WESTERN JUNCTION	1.45	1.30	1.30	1.30	1.30	1.30

SORELL						
LOCALITY	CLASS					
	RESIDENTIAL	COMMERCIAL	INDUSTRIAL	PRIMARY PRODUCTION	COMMUNITY SERVICES	OTHER
GENERAL	1.40	1.15	1.15	1.30	1.15	1.15
CARLTON	1.50	1.15	1.15	1.30	1.15	1.15
CARLTON RIVER	1.50	1.15	1.15	1.30	1.15	1.15
DODGES FERRY	1.50	1.15	1.15	1.30	1.15	1.15
MIDWAY POINT	1.50	1.15	1.15	1.30	1.15	1.15
PRIMROSE SANDS	1.60	1.15	1.15	1.30	1.15	1.15
SORELL	1.50	1.15	1.15	1.30	1.15	1.15

SOUTHERN MIDLANDS						
LOCALITY	CLASS					
	RESIDENTIAL	COMMERCIAL	INDUSTRIAL	PRIMARY PRODUCTION	COMMUNITY SERVICES	OTHER
GENERAL	1.40	1.00	1.00	1.35	1.00	1.00

TASMAN						
LOCALITY	CLASS					
	RESIDENTIAL	COMMERCIAL	INDUSTRIAL	PRIMARY PRODUCTION	COMMUNITY SERVICES	OTHER
GENERAL	1.30	1.00	1.00	1.15	1.00	1.00

WARATAH-WYNYARD						
LOCALITY	CLASS					
	RESIDENTIAL	COMMERCIAL	INDUSTRIAL	PRIMARY PRODUCTION	COMMUNITY SERVICES	OTHER
GENERAL	1.25	1.15	1.15	1.20	1.15	1.15
WARATAH	1.35	1.15	1.15	1.20	1.15	1.15

WEST COAST						
LOCALITY	CLASS					
	RESIDENTIAL	COMMERCIAL	INDUSTRIAL	PRIMARY PRODUCTION	COMMUNITY SERVICES	OTHER
GENERAL	1.40	1.20	1.20	1.30	1.20	1.20
STRAHAN	1.10	1.20	1.20	1.30	1.20	1.20
TULLAH	1.20	1.20	1.20	1.30	1.20	1.20
ZEEHAN	2.00	1.20	1.20	1.30	1.20	1.20

WEST TAMAR						
LOCALITY	CLASS					
	RESIDENTIAL	COMMERCIAL	INDUSTRIAL	PRIMARY PRODUCTION	COMMUNITY SERVICES	OTHER
GENERAL	1.50	1.40	1.40	1.75	1.40	1.40
BEACONSFIELD	1.25	1.40	1.40	1.75	1.40	1.40
CLARENCE POINT	1.30	1.40	1.40	1.75	1.40	1.40
EXETER	1.75	1.40	1.40	1.75	1.40	1.40
GREENS BEACH	1.30	1.40	1.40	1.75	1.40	1.40
KELSO	1.30	1.40	1.40	1.75	1.40	1.40

Dated this 26th day of February, 2021.

Tim Grant, VALUER-GENERAL

Unclaimed Monies

The Public Trustee is holding unclaimed funds where estate beneficiaries cannot be located. If you believe you may be the next-of-kin of any of the persons listed, please contact the Public Trustee and quote the name and reference number listed below.

ESTATE NAME	REFERENCE
TOWELL FRANK MICHAEL	18977000
WALLACE CATHERINE RITA	15282300
FINDLAY JOHN	18514400
BAKER RUBY OLIVE	19530200
KIWAK FRANK	17305800
E L YARD A/C G YARD	15992001
SABUNOVIC AZIZ	16850500
HEALY LETITIA WARD	17325800
REEVES EDNA JOY	19417700
WINDRED WALTER	10176400
EVERETT MARGARET BETTY	10044800
WEBB PETER STACEY JAMES	19496300
LAMBERT ANTHONY GORDON	19305200
MARKY GUS GRAY	15209300
BLAKE MAVIS FANNY	10306000
WHITTLE LESLIE	18096100
TRIFFITT SHARN CHARLES	19644901
BREHENY WILLIAM BRUCE	16841400
SCHLUTER HELMUT FRIEDRICH	13596300
DAVIDSON M (MASONIC CLUB TAS)	11624901
JONES P F	20366901
HOLMES J H	20366902
WALSH TERRENCE EDGAR	13746600
VAN DONSELAAR JOHN ALBERTUS	19666100
FITZGERALD PATRICK LAURENCE	20757300
LIPSCOMBE H S (HENRY LIPSCOMBE)	10084801
SMITH GEORGE NORTON	10153200
TOMANEK KAREL	16791800
KING FLORENCE MADGE	17954900
WELLARD CHARLES HENRY	10177800
WILSON WC (A L WILSON)	19963801
WILSON W C (A M WILSON)	19963802
WILSON W C (G A E WILSON)	19963803
WILSON W C (E H WILSON)	19963804
WILSON W C (A E WILSON)	19963805
WILSON W C (A H WILSON)	19963806

David Benbow
Chief Executive Officer

Public Trustee, 116 Murray Street, Hobart
FREECALL 1800 068 784 www.publictrustee.tas.gov.au
tpt@publictrustee.tas.gov.au

Mental Health

MENTAL HEALTH ACT 2013

Notice is hereby given that in accordance with section 138 of the *Mental Health Act 2013*, the undermentioned person has been approved as a medical practitioner for provisions of the *Mental Health Act 2013* within the Chief Civil Psychiatrist and Chief Forensic Psychiatrist's jurisdictions for a period of five years commencing on 4th day of March 2021.

DR PETER BARRY ADAMS

Dated this fourth day of March 2021

DR AARON ROBERT GROVES
Chief Civil Psychiatrist/Chief Forensic Psychiatrist

MENTAL HEALTH ACT 2013

Notice is hereby given that in accordance with section 138 of the *Mental Health Act 2013*, the undermentioned person has been approved as a medical practitioner for provisions of the *Mental Health Act 2013* within the Chief Civil Psychiatrist and Chief Forensic Psychiatrist's jurisdictions for a period of five years commencing on 4th day of March 2021.

DR RAYMOND NAHID ALI

Dated this fourth day of March 2021

DR AARON ROBERT GROVES
Chief Civil Psychiatrist/Chief Forensic Psychiatrist

MENTAL HEALTH ACT 2013

Notice is hereby given that in accordance with section 139 of the *Mental Health Act 2013*, the undermentioned person has been approved as a Mental Health Officer for provisions of the *Mental Health Act 2013* within the Chief Civil Psychiatrist and Chief Forensic Psychiatrist's jurisdictions for a period of five years commencing on the 22nd day of February 2021.

AINSLEE DIANNE ALLAN

Dated this twenty-second day of February 2021

DR AARON ROBERT GROVES
Chief Civil Psychiatrist/Chief Forensic Psychiatrist

MENTAL HEALTH ACT 2013

Notice is hereby given that in accordance with section 139 of the *Mental Health Act 2013*, the undermentioned person has been approved as a Mental Health Officer for provisions of the *Mental Health Act 2013* within the Chief Civil Psychiatrist and Chief Forensic Psychiatrist's jurisdictions for a period of five years commencing on the 23rd day of February 2021.

JANE PATRICIA BAMFORD

Dated this twenty-third day of February 2021

DR AARON ROBERT GROVES
Chief Civil Psychiatrist/Chief Forensic Psychiatrist

MENTAL HEALTH ACT 2013

Notice is hereby given that in accordance with section 139 of the *Mental Health Act 2013*, the undermentioned person has been approved as a Mental Health Officer for provisions of the *Mental Health Act 2013* within the Chief Civil Psychiatrist and Chief Forensic Psychiatrist's jurisdictions for a period of five years commencing on the 22nd day of February 2021.

CHARMAINE BOX

Dated this twenty-second day of February 2021

DR AARON ROBERT GROVES
Chief Civil Psychiatrist/Chief Forensic Psychiatrist

MENTAL HEALTH ACT 2013

Notice is hereby given that in accordance with section 139 of the *Mental Health Act 2013*, the undermentioned person has been approved as a Mental Health Officer for provisions of the *Mental Health Act 2013* within the Chief Civil Psychiatrist and Chief Forensic Psychiatrist's jurisdictions for a period of five years commencing on the 23rd day of February 2021.

MARLENE REA CRONIN

Dated this twenty-third day of February 2021.

DR AARON ROBERT GROVES
Chief Civil Psychiatrist/Chief Forensic Psychiatrist

MENTAL HEALTH ACT 2013

Notice is hereby given that in accordance with section 138 of the *Mental Health Act 2013*, the undermentioned person has been approved as a medical practitioner for provisions of the *Mental Health Act 2013* within the Chief Civil Psychiatrist and Chief Forensic Psychiatrist's jurisdictions for a period of five years commencing on the 4th day of March 2021.

DR TY JOSHUA DRAKE

Dated this fourth day of March 2021

DR AARON ROBERT GROVES
Chief Civil Psychiatrist/Chief Forensic Psychiatrist

MENTAL HEALTH ACT 2013

Notice is hereby given that in accordance with section 138 of the *Mental Health Act 2013*, the undermentioned person has been approved as a medical practitioner for provisions of the *Mental Health Act 2013* within the Chief Civil Psychiatrist and Chief Forensic Psychiatrist's jurisdictions for a period of five years commencing on the 19th day of February 2021.

DR STEVEN BRADLEY GEORGE

Dated this nineteenth day of February 2021

DR AARON ROBERT GROVES
Chief Civil Psychiatrist/Chief Forensic Psychiatrist

MENTAL HEALTH ACT 2013

Notice is hereby given that in accordance with section 138 of the *Mental Health Act 2013*, the undermentioned person has been approved as a nurse for provisions of the *Mental Health Act 2013* within the Chief Civil Psychiatrist and Chief Forensic Psychiatrist's jurisdictions for a period of five years commencing on the 23rd day of February 2021.

KATIE LEE HARWOOD

Dated this twenty-third day of February 2021

DR AARON ROBERT GROVES
Chief Civil Psychiatrist/Chief Forensic Psychiatrist

MENTAL HEALTH ACT 2013

Notice is hereby given that in accordance with section 139 of the *Mental Health Act 2013*, the undermentioned person has been approved as a Mental Health Officer for provisions of the *Mental Health Act 2013* within the Chief Civil Psychiatrist and Chief Forensic Psychiatrist's jurisdictions for a period of five years commencing on the 4th day of March 2021.

STACEY MARIE HYLAND

Dated this fourth day of March 2021

DR AARON ROBERT GROVES
Chief Civil Psychiatrist/Chief Forensic Psychiatrist

MENTAL HEALTH ACT 2013

Notice is hereby given that in accordance with section 138 of the *Mental Health Act 2013*, the undermentioned person has been approved as a medical practitioner for provisions of the *Mental Health Act 2013* within the Chief Civil Psychiatrist and Chief Forensic Psychiatrist's jurisdictions for a period of five years commencing on 4th day of March 2021.

DR PERRIN TAIHAU KWEK

Dated this fourth day of March 2021

DR AARON ROBERT GROVES
Chief Civil Psychiatrist/Chief Forensic Psychiatrist

MENTAL HEALTH ACT 2013

Notice is hereby given that in accordance with section 138 of the *Mental Health Act 2013*, the undermentioned person has been approved as a nurse for provisions of the *Mental Health Act 2013* within the Chief Civil Psychiatrist and Chief Forensic Psychiatrist's jurisdictions for a period of five years commencing on the 4th day of March 2021.

ZAC TIMOTHY SARGISON

Dated this fourth day of March 2021

DR AARON ROBERT GROVES
Chief Civil Psychiatrist/Chief Forensic Psychiatrist

MENTAL HEALTH ACT 2013

Notice is hereby given that in accordance with section 138 of the *Mental Health Act 2013*, the undermentioned person has been approved as a medical practitioner for provisions of the *Mental Health Act 2013* within the Chief Civil Psychiatrist and Chief Forensic Psychiatrist's jurisdictions for a period of five years commencing on 26th day of February 2021.

DR MONA LUCIA THORPE

Dated this twenty-sixth day of February 2021

DR AARON ROBERT GROVES
Chief Civil Psychiatrist/Chief Forensic Psychiatrist

MENTAL HEALTH ACT 2013

Notice is hereby given that in accordance with section 139 of the *Mental Health Act 2013*, the undermentioned person has been approved as a Mental Health Officer for provisions of the *Mental Health Act 2013* within the Chief Civil Psychiatrist and Chief Forensic Psychiatrist's jurisdictions for a period of five years commencing on the 23rd day of February 2021.

LILY CATHERINE VARDON

Dated this twenty-third day of February 2021

DR AARON ROBERT GROVES
Chief Civil Psychiatrist/Chief Forensic Psychiatrist

MENTAL HEALTH ACT 2013

Notice is hereby given that in accordance with section 139 of the *Mental Health Act 2013*, the undermentioned person has been approved as a Mental Health Officer for provisions of the *Mental Health Act 2013* within the Chief Civil Psychiatrist and Chief Forensic Psychiatrist's jurisdictions for a period of five years commencing on the 26th day of February 2021.

BENJAMIN JOHN SMITH

Dated this twenty-sixth day of February 2021

DR AARON ROBERT GROVES
Chief Civil Psychiatrist/Chief Forensic Psychiatrist

MENTAL HEALTH ACT 2013

Notice is hereby given that in accordance with section 139 of the *Mental Health Act 2013*, the undermentioned person has been approved as a Mental Health Officer for provisions of the *Mental Health Act 2013* within the Chief Civil Psychiatrist and Chief Forensic Psychiatrist's jurisdictions for a period of five years commencing on the 26th day of February 2021

DAVID LINDSAY WATKINS

Dated this twenty-sixth day of February 2021

DR AARON ROBERT GROVES
Chief Civil Psychiatrist/Chief Forensic Psychiatrist

MENTAL HEALTH ACT 2013

Notice is hereby given that in accordance with section 139 of the *Mental Health Act 2013*, the undermentioned person has been approved as a mental health officer for provisions of the *Mental Health Act 2013* within the Chief Civil Psychiatrist and Chief Forensic Psychiatrist's jurisdictions for a period of five years commencing on the 2nd day of March, 2021.

KELSEY INTELISANO

Dated this second day of March 2021

DR AARON ROBERT GROVES
Chief Civil Psychiatrist/Chief Forensic Psychiatrist

MENTAL HEALTH ACT 2013

Notice is hereby given that in accordance with section 139 of the *Mental Health Act 2013*, the undermentioned person has been approved as a mental health officer for provisions of the *Mental Health Act 2013* within the Chief Civil Psychiatrist and Chief Forensic Psychiatrist's jurisdictions for a period of five years commencing on the 4th day of March, 2021.

STEVEN PACHENO

Dated this fourth day of March 2021

DR AARON ROBERT GROVES
Chief Civil Psychiatrist/Chief Forensic Psychiatrist

MENTAL HEALTH ACT 2013

Notice is hereby given that in accordance with section 139 of the *Mental Health Act 2013*, the undermentioned person has been approved as a mental health officer for provisions of the *Mental Health Act 2013* within the Chief Civil Psychiatrist and Chief Forensic Psychiatrist's jurisdictions for a period of five years commencing on the 12th day of February, 2021.

RYAN POSSELT

Dated this twelfth day of February 2021

DR AARON ROBERT GROVES
Chief Civil Psychiatrist/Chief Forensic Psychiatrist

MENTAL HEALTH ACT 2013

Notice is hereby given that in accordance with section 139 of the *Mental Health Act 2013*, the undermentioned person has been approved as a mental health officer for provisions of the *Mental Health Act 2013* within the Chief Civil Psychiatrist and Chief Forensic Psychiatrist's jurisdictions for a period of five years commencing on the 2nd day of March, 2021.

ANTHONY STEEDMAN

Dated this second day of March 2021

DR AARON ROBERT GROVES
Chief Civil Psychiatrist/Chief Forensic Psychiatrist

MENTAL HEALTH ACT 2013

Notice is hereby given that in accordance with section 139 of the *Mental Health Act 2013*, the undermentioned person has been approved as a mental health officer for provisions of the *Mental Health Act 2013* within the Chief Civil Psychiatrist and Chief Forensic Psychiatrist's jurisdictions for a period of five years commencing on the 2nd day of March, 2021.

SHANNYN CHISHOLM

Dated this second day of March 2021

DR AARON ROBERT GROVES
Chief Civil Psychiatrist/Chief Forensic Psychiatrist

MENTAL HEALTH ACT 2013

Notice is hereby given that in accordance with section 139 of the *Mental Health Act 2013*, the undermentioned person has been approved as a mental health officer for provisions of the *Mental Health Act 2013* within the Chief Civil Psychiatrist and Chief Forensic Psychiatrist's jurisdictions for a period of five years commencing on the 4th day of March, 2021.

JAMES ELLIS

Dated this fourth day of March 2021

DR AARON ROBERT GROVES
Chief Civil Psychiatrist/Chief Forensic Psychiatrist

MENTAL HEALTH ACT 2013

Notice is hereby given that in accordance with section 139 of the *Mental Health Act 2013*, the undermentioned person has been approved as a Mental Health Officer for provisions of the *Mental Health Act 2013* within the Chief Civil Psychiatrist and Chief Forensic Psychiatrist's jurisdictions for a period of five years commencing on the 28th day of February 2021.

JANELLE MAREE HITE

Dated this twenty-third day of February 2021

DR AARON ROBERT GROVES
Chief Civil Psychiatrist/Chief Forensic Psychiatrist

Macquarie Point Development Corporation

SULLIVANS COVE PLANNING SCHEME 1997

NOTICE OF MINOR AMENDMENT TO THE PLANNING AMENDMENT

Notice is given under s39J(5)(a) of the *Macquarie Point Development Corporation Act 2012* that the Tasmanian Planning Commission has now made a minor amendment to the planning amendments to the *Sullivans Cove Planning Scheme 1997* in relation to Macquarie Point, that take effect on Wednesday, 10 March 2021.

In accordance with the Act, the Macquarie Point Development Corporation requested a minor planning amendment to the *Sullivans Cove Planning Scheme 1997* to correct an accidental omission in the planning amendments made in October 2019. The purpose of the requested amendment is to correct an accidental omission with regard to Figure 32.3 that is missing a key reference to the 'Building Areas' highlighted in the map.

The amendment will now form part of the Hobart City Council's *Sullivans Cove Planning Scheme 1997*. Please contact the Hobart City Council to view a copy of the amendments.

MICHAEL DARREL JOSEPH FERGUSON
Minister for State Growth

Land Acquisition

LAND ACQUISITION ACT 1993

NOTICE OF ACQUISITION

(Section 16)

Pursuant to section 16 of the *Land Acquisition Act 1993* (**LAA**) and section 56G of the *Water and Sewerage Industry Act 2008* the Tasmanian Water & Sewerage Corporation Pty Ltd (ACN 162 220 653) (**TasWater**) (being an acquiring authority in accordance with the LAA), does hereby declare that the Pipeline and Services Easement described in Schedule 1 hereto is taken and vested in TasWater absolutely under the LAA for the authorised purpose of the ongoing access for the development of sewerage pipeline for the Kingborough Project together with any other rights, functions or obligations stated in the Pipeline and Services Easement as described in Schedule 1.

Dated this tenth day of March 2021.

For and on behalf of Tasmanian Water & Sewerage Corporation Pty Ltd (ACN 162 220 653),
Jessica Rowbottom,
Legal Practitioner

Schedule 1

A Pipeline and Services Easement within that area of land described and shown as "PIPELINE & SERVICES EASEMENT 8.00 WIDE" (**Easement Land**) on the Plan at Schedule 2 within the land comprised in Folio of the Register Volume 47277 Folio 1 situated in the town of Margate and registered in the name of Christian Schools Tasmania.

The Pipeline and Services Easement is defined as follows:-

THE FULL RIGHT AND LIBERTY for the TasWater at all times to:

- (1) enter and remain upon the Easement Land with or without employees, contractors, agents and all other persons duly authorised by it and with or without machinery, vehicles, plant and equipment;
- (2) investigate, take soil, rock and other samples, survey, open and break up and excavate the Easement Land for any purpose or activity that TasWater is authorised to do or undertake;
- (3) install, retain, operate, modify, relocate, maintain, inspect, cleanse and repair the Infrastructure;
- (4) run and pass sewage, water and electricity through and along the Infrastructure;
- (5) do all works reasonably required in connection with such activities or as may be authorised or required by any law:
 - (a) without doing unnecessary damage to the Easement Land; and
 - (b) leaving the Easement Land in a clean and tidy condition; and
- (6) if the Easement Land is not directly accessible from a highway, then for the purpose of undertaking any of the preceding activities TasWater may with or without employees, contractors, agents and any other persons authorised by it, and with or without machinery, vehicles, plant and equipment enter the Land from the highway at any vehicle entry and cross the Land to the Easement Land; and
- (7) use the Easement Land as a right of carriageway for the purpose of undertaking any of the preceding purposes on other land, with TasWater reinstating any damage that it causes in doing so to any boundary fence of the Land.

SECONDLY, the benefit of a covenant in gross for TasWater with the registered proprietor/s of the Easement Land and their successors and assigns not to erect any building, or place any structures, objects, vegetation, or remove any thing that supports, protects or covers any Infrastructure on or in the Easement Land, without the prior consent of TasWater to the intent that the burden of the covenant may run with and bind the servient land and every part thereof and that the benefit thereof may be annexed to the easement herein described.

Interpretation:

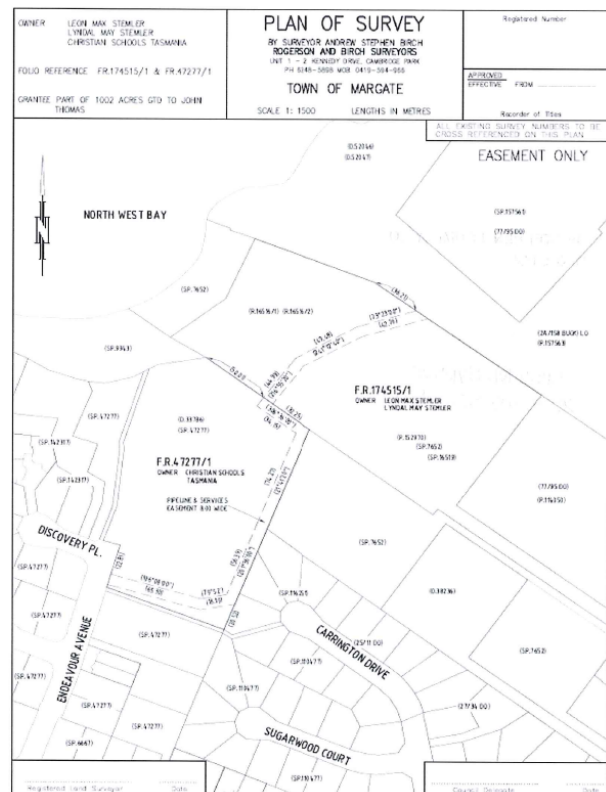
Easement Land means the land depicted on the Plan by the notation as "PIPELINE & SERVICES EASEMENT 8.00 WIDE".

"Land" means the land contained in Folio of the Register Volume 47277 Folio 1.

"Infrastructure" means infrastructure owned or for which TasWater is responsible and includes but is not limited to:

- (a) sewer pipes and water pipes and associated valves;
- (b) telemetry and monitoring devices;
- (c) inspection and access pits;
- (d) electricity assets and other conducting media (excluding telemetry and monitoring devices);
- (e) markers or signs indicating the location of the Easement Land or any other Infrastructure, or any warnings or restrictions with respect to the Easement Land or any other Infrastructure;
- (f) anything reasonably required to support, protect or cover any of the Infrastructure.

Schedule 2



LAND ACQUISITION ACT 1993

NOTICE OF ACQUISITION

(Section 18)

In pursuance of Section 18 of the *Land Acquisition Act 1993*, I, Timothy William Grant, Valuer-General acting as a delegate of the Minister of the Crown for the time being administering the *Land Acquisition Act 1993* do hereby declare that the land in the Schedule hereto is taken and vested in the Crown absolutely under the said Act for the authorised purpose, being for road purposes.

Given under my hand this 10th day of March 2021.

Tim Grant
Valuer-General
Department of Primary Industries, Parks, Water and
Environment
134 Macquarie Street, Hobart

SCHEDULE

All that 203m2 being Lot 2 and 1750m2 being Lot 3 of land situate in the Parish of Dulverton, Land District of Devon on Plan of Survey P180284 in the Land Titles Office being portion of the land comprised in Folio of the Register Volume 150930 Folio 1 of which Mark John McGlade and Paula Cherree McGlade are the registered proprietors.

Location: Railton Road - Shoulder Widening

Municipal Area: Latrobe

(21-181)

LAND ACQUISITION ACT 1993

NOTICE OF ACQUISITION

(Section 18)

In pursuance of Section 18 of the *Land Acquisition Act 1993*, I, Timothy William Grant, Valuer-General acting as a delegate of the Minister of the Crown for the time being administering the *Land Acquisition Act 1993* do hereby declare that the land in the Schedule hereto is taken and vested in the Crown absolutely under the said Act for the authorised purpose, being for road purposes.

Given under my hand this 10th day of March 2021.

Tim Grant
Valuer-General
Department of Primary Industries, Parks, Water and
Environment
134 Macquarie Street, Hobart

SCHEDULE

All that 983m2 of land situate in the Parish of Dulverton, Land District of Devon being Lot 1 on Plan of Survey P180284 in the Land Titles Office being portion of the land comprised in Folio of the Register Volume 136649 Folio 1 of which The Trust Company (PTAL) Limited is the registered proprietor.

Location: Railton Road - Shoulder Widening

Municipal Area: Latrobe

(21-178)

LAND ACQUISITION ACT 1993

NOTICE OF ACQUISITION

(Section 18)

In pursuance of Section 18 of the *Land Acquisition Act 1993*, I, Timothy William Grant, Valuer-General acting as a delegate of the Minister of the Crown for the time being administering the *Land Acquisition Act 1993* do hereby declare that the land in the Schedule hereto is taken and vested in the Crown absolutely under the said Act for the authorised purpose, being for road purposes.

Given under my hand this 10th day of March 2021.

Tim Grant
Valuer-General
Department of Primary Industries, Parks, Water and
Environment
134 Macquarie Street, Hobart

SCHEDULE

All that 2637m2 being Lot 6, 1683m2 being Lot 7, 2778m2 being Lot 8 and 621m2 being Lot 9 of land situate in the Parish of Dulverton, Land District of Devon on Plan of Survey P180284 in the Land Titles Office being portion of the land comprised in Folio of the Register Volume 120090 Folio 1 of which The Trust Company (PTAL) Limited is the registered proprietor.

Location: Railton Road - Shoulder Widening

Municipal Area: Kentish

(21-179)

Staff Movements

Permanent Appointments

Agency	Duties Assigned	Employee	Probation Period	Date of Effect
Primary Industries, Parks, Water and Environment	Senior Policy Officer (Fisheries Digital Transition Project)	M March	Nil	19/02/2021
Education	Analytics and Insights Officer	A Proctor	6 Months	03/03/2021
Department of Health	Physiotherapist	K McIntosh	6 Months	29/03/2021
Justice	Family Violence Administration and Liaison Support Officer	E Campbell	Nil	01/03/2021
Primary Industries, Parks, Water and Environment	Environmental Officer	L Saltmarsh	6 Months	22/03/2021
TasTAFE	HR Officer	R Welsh	Nil	09/03/2021
TasTAFE	Teacher	Y Silva	12 Months	03/03/2021
Department of Health	Administrative Assistant	P Morley	6 Months	15/03/2021
Justice	Probation Officer	V Young	Nil	23/02/2021
Department of Health	Registered Nurse	A Pettersen	6 Months	29/03/2021
Treasury and Finance	Client Services Officer	R Williams	6 Months	09/03/2021
Department of Health	Administrative Assistant	J Bellette	6 Months	16/03/2021
Department of Health	Administrative Assistant	K Smith	6 Months	16/03/2021
Premier and Cabinet	Project Manager (Emergency Management Communications)	S Driessen	6 Months	19/02/2021
Primary Industries, Parks, Water and Environment	Marine Farming Management Officer	K Matten	Nil	10/02/2021
Police, Fire and Emergency Management	Clerical Support Officer	G Bryan	6 Months	22/03/2021
Primary Industries, Parks, Water and Environment	GIS and Database Officer	S Zheng	Nil	04/03/2021
Department of Health	Hospital Assistant	J Lowe	6 Months	07/03/2021
Department of Health	Hospital Assistant	M Cherry	6 Months	07/03/2021
Department of Health	Registered Nurse	Y Sun	6 Months	09/03/2021
Police, Fire and Emergency Management	Firefighter	D Freeborn	6 Months	01/03/2021
Police, Fire and Emergency Management	Firefighter	E Allitt	6 Months	01/03/2021
Police, Fire and Emergency Management	Firefighter	D Green	6 Months	01/03/2021
Police, Fire and Emergency Management	Firefighter	Z White	6 Months	01/03/2021
Police, Fire and Emergency Management	Firefighter	S Bartley	6 Months	01/03/2021
Police, Fire and Emergency Management	Firefighter	R Lees	6 Months	01/03/2021
Police, Fire and Emergency Management	Firefighter	T Malone	6 Months	01/03/2021
Police, Fire and Emergency Management	Firefighter	T Mapley	6 Months	01/03/2021
Police, Fire and Emergency Management	Firefighter	M Davies	6 Months	01/03/2021
Police, Fire and Emergency Management	Firefighter	J Gray	6 Months	01/03/2021
Police, Fire and Emergency Management	Firefighter	J Harper	6 Months	01/03/2021
Police, Fire and Emergency Management	Firefighter	V Hokkinen	6 Months	01/03/2021
Police, Fire and Emergency Management	Firefighter	S Oram	6 Months	01/03/2021
Police, Fire and Emergency Management	Firefighter	A Smith	6 Months	01/03/2021
Police, Fire and Emergency Management	Firefighter	L Coombe	6 Months	01/03/2021

Police, Fire and Emergency Management	Firefighter	T Pollack	6 Months	01/03/2021
Police, Fire and Emergency Management	Firefighter	B Baker	6 Months	01/03/2021
Police, Fire and Emergency Management	Firefighter	G Brennan	6 Months	01/03/2021
Police, Fire and Emergency Management	Firefighter	M Smith	6 Months	01/03/2021
Police, Fire and Emergency Management	Firefighter	C St Jack	6 Months	01/03/2021
Police, Fire and Emergency Management	Firefighter	S Wilkinson	6 Months	01/03/2021
Police, Fire and Emergency Management	Firefighter	T Corcoran	6 Months	01/03/2021
Police, Fire and Emergency Management	Firefighter	G Douglas	6 Months	01/03/2021
Police, Fire and Emergency Management	Firefighter	S Harris	6 Months	01/03/2021
Police, Fire and Emergency Management	Firefighter	E Lade	6 Months	01/03/2021
Police, Fire and Emergency Management	Firefighter	N MacLean	6 Months	01/03/2021
Police, Fire and Emergency Management	Firefighter	J Mercer	6 Months	01/03/2021
Police, Fire and Emergency Management	Firefighter	S Cason	6 Months	01/03/2021
Police, Fire and Emergency Management	Firefighter	L Hochman	6 Months	01/03/2021
Police, Fire and Emergency Management	Firefighter	J Dwyer	6 Months	02/08/2021
Police, Fire and Emergency Management	Firefighter	B Daniels	6 Months	02/08/2021
Police, Fire and Emergency Management	Firefighter	C Briggs	6 Months	02/08/2021
Police, Fire and Emergency Management	Firefighter	R Jordan	6 Months	02/08/2021
Police, Fire and Emergency Management	Firefighter	H Salmon Krone	6 Months	02/08/2021
Police, Fire and Emergency Management	Firefighter	D Tyrrell	6 Months	02/08/2021
Police, Fire and Emergency Management	Firefighter	M Abbott	6 Months	02/08/2021
Police, Fire and Emergency Management	Firefighter	S Cousins	6 Months	02/08/2021
Police, Fire and Emergency Management	Firefighter	T Hankey	6 Months	02/08/2021
Police, Fire and Emergency Management	Firefighter	A Jacobson	6 Months	02/08/2021
Police, Fire and Emergency Management	Firefighter	J Richards	6 Months	02/08/2021
Police, Fire and Emergency Management	Firefighter	C Tilbury	6 Months	02/08/2021
Police, Fire and Emergency Management	Firefighter	T Rolls	6 Months	01/03/2021
Police, Fire and Emergency Management	Firefighter	D Clark	6 Months	02/08/2021
Police, Fire and Emergency Management	Firefighter	S Maxwell	6 Months	01/03/2021
Police, Fire and Emergency Management	Firefighter	A Lincoln	6 Months	02/08/2021
Police, Fire and Emergency Management	Firefighter	B Turner	6 Months	02/08/2021

Fixed-Term Appointments of greater than 12 Months

Agency	Duties Assigned	Employee	Term	Date of Effect
TasTAFE	Teacher	S Lawther	18 Months	01/03/2021
Premier and Cabinet	Principal Policy Officer	A Haigh	24 Months	15/03/2021

Primary Industries, Parks, Water and Environment	Laboratory Technical Officer	K Hutchins	24 Months	23/03/2021
Primary Industries, Parks, Water and Environment	Property Officer	N Weaver	24 Months	15/03/2021

Promotion of Permanent Employees

Agency	Duties Assigned	Employee	Date of Effect
Communities Tasmania	Manager - Custodial Youth Justice	S Watson	02/03/2021
Department of Health	Clinical Nurse Consultant - Perinatal & Infant Mental Health	A Cocks	01/03/2021
Department of Health	Clinical Nurse Consultant	L Shadwick	07/03/2021
Premier and Cabinet	Vendor Manager	N Smith	01/03/2021
Education	Library Services Coordinator - Community Learning	K Connell	09/03/2021
Treasury and Finance	Senior Revenue Officer	J Hibberd	11/03/2021
Department of Health	Associate Nurse Unit Manager (ANUM)	S Dhakal	01/03/2021
Department of Health	Clinical Nurse Consultant - Stomal Therapy	T Carydakis	20/02/2021
Department of Health	Senior Social Worker	K Nobes	01/03/2021
Police, Fire and Emergency Management	Planning Officer	S Bouwman	01/03/2021

Resignation of Officers

Agency	Duties Assigned	Employee	Date of Effect
Treasury and Finance	Deputy Secretary, Corporate and Governance	E Babic	22/02/2021

Resignation of Permanent Employees

Agency	Duties Assigned	Employee	Date of Effect
Department of Health	Registered Nurse	P Evans	29/01/2021
Department of Health	Registered Midwife	C Jamson	06/02/2021
Department of Health	Screening Services Officer	K Lewis	01/03/2021
Communities Tasmania	Manager Community Services	N Gilson	03/03/2021
Justice	Senior Systems Administrator	E van Maanen	12/03/2021
Treasury and Finance	Revenue Officer	J Clark	03/03/2021
Department of Health	Registered Nurse	L Towns	20/02/2021
Communities Tasmania	Child Safety Officer	N Erb	24/02/2021
Department of Health	Registered Nurse	S Auld	06/03/2021
Department of Health	Manager Business Support	B Pilgrim	26/02/2021
Treasury and Finance	Client Services Officer	T Marr	09/03/2021

Retirement of Permanent Employees

Agency	Duties Assigned	Employee	Date of Effect
Department of Health	Registered Nurse	S Shea	07/02/2021
Treasury and Finance	Assistant Director	R Chan	01/03/2021
Department of Health	Registered Nurse- Community	D Smith	06/03/2021
Department of Health	Perioperative Technician	M Coutts	06/03/2021
Premier and Cabinet	Client Service Officer	L Summers	11/03/2021

Disclaimer.

Products and services advertised in this publication are not endorsed by the State of and the State does not accept any responsibility for the content or quality of reproduction. The Contractor reserves the right to reject any advertising material it considers unsuitable for government publication.

Copyright.

The Tasmanian Government Gazette and Tasmanian State Services are subject to the Copyright Act. No part of any material published in the Tasmanian Government Gazette or the Tasmanian State Services Notices may be reproduced except in accordance with the Copyright Act.

Printed by Acrodata Tasmania Pty Ltd under authority of the Government of the State of Tasmania.